

# EBONY

SIMPLICITY  
ON DISPLAY

CRIOCCABIN  
TASTE PRESENTATION





Ebony, a refrigerated counter conceived with essential design enhancing the goods displayed.

Its clean design makes products highly visible as its plain surfaces reduce light reflections and refractions to a minimum.

**IT**

Ebony è il banco refrigerato che mette l'essenzialità del design al servizio di un'alta visibilità.

Un design pulito e semplice, fatto di superfici piane che riducono al minimo riflessi e rifrazione, per dare il giusto risalto ai prodotti esposti.



The Power of Simplicity

## Tutti gli angoli di cui hai bisogno.

Ebony è estremamente versatile e personalizzabile: è possibile realizzarlo con angoli sferici di 90°, 45° o 22.5°, aperti o chiusi, e con angoli a spigolo di qualunque gradazione, a seconda delle esigenze.

**EN**

### All the corners you need.

Ebony is extremely versatile and customisable: it can be made with round corners (90°, 45° or 22.5°), open or closed, and with angled corners of any gradation, as required.

**FR**

### Tous les angles dont vous avez besoin.

Ebony est extrêmement universel et personnalisable: il est possible de le réaliser avec des angles sphériques de 90°, 45° ou 22.5°, ouverts ou fermés, ainsi qu'avec des angles vifs de n'importe quel degré, en fonction des exigences spécifiques.

**DE**

### Alle Ecken, die Sie brauchen.

Ebenholz ist äußerst vielseitig und anpassbar: Es ist möglich, es mit sphärischen Winkeln von 90°, 45° oder 22,5°, offen oder geschlossen, und mit Eckwinkeln von jedem Grad zu erstellen, je nach Bedarf.



1

Vetro anteriore apribile verso l'alto con pistoni.

**EN** Front glass that opens upwards with pistons.

**FR** Vitre frontale ouvrable vers le haut avec pistons.

**DE** Nach oben öffnendes Frontglas (mit Kolben).

2

Illuminazione CRIOLED®.

**EN** CRIOLED® lighting.

**FR** Eclairage CRIOLED®.

**DE** CRIOLED®-Beleuchtung.

3

Zona esposizione e interno del mobile in acciaio inox.

**EN** Inside area and display surface in stainless steel.

**FR** Zone d'exposition et intérieur du meuble en acier inoxydable.

**DE** Ausstellungsfläche und Schrankinnenseite aus Edelstahl.

4

Vasca senza componenti frigoriferi per garantire la massima pulizia.

**EN** Tank without refrigerating installations for the utmost cleanliness.

**FR** Bac sans composants frigorifiques afin de garantir une propreté maximale.

**DE** Wanne ohne kältetechnische Komponenten für maximale Sauberkeit.



**5** Zoccolo parapolvere su tutto il perimetro del banco.  
**EN** Perimetrical bumper skirting  
**FR** Plinthe antipoussière sur tout le périmètre du comptoir.  
**DE** Staubdichter Sockel um den gesamten Umfang der Theke.

**6** Refrigerazione ventilata con evaporatore trattato in cataforesi anticorrosione.  
**EN** Ventilated refrigeration with evaporator featuring anticorrosion treatment (electrophoretically coated)  
**FR** Réfrigération ventilée avec évaporateur traité par cataphorèse anticorrosion.  
**DE** Belüftete Kühlung mit korrosionsgeschütztem Kataphorese-Verdampfer.

**7** Pannello frontale personalizzabile - vedi tabella colori.  
**EN** Customisable front panel - see colour chart.  
**FR** Panneau frontal personnalisable - voir nuancier couleurs.  
**DE** Individuell gestaltbare Frontplatte - siehe Farbkarte.

**8** Canalizzabile.  
**EN** Multiplexable.  
**FR** Canalisable.  
**DE** Kanalisierung möglich.

**9** Cornice frontale in alluminio lucido (optional).  
**EN** Polished aluminium front frame (optional).  
**FR** Encadrement frontal en aluminium brillant (option).  
**DE** Frontrahmen aus poliertem Aluminium (optional).

**10** Ventilazione frontale antiappannante  
**EN** Anti-fog front ventilation.  
**FR** Ventilation frontale anti-buée.  
**DE** Antibeschlag-Belüftung an der Vorderseite.



Essential Design, High Visibility

<b>EBONY</b>	L (cm)*	93,7	125	187,5	250	312,5	375	437,5	500
<b>Consumo annuo / Annual Energy Consumption (remote version)</b>	<b>kWh/a</b>	<b>315</b>	<b>354</b>	<b>556</b>	<b>634</b>	<b>836</b>	<b>915</b>	<b>1116</b>	<b>1194</b>
Potenza frigorifera Ø 24-deft / Refrigeration Power Ø 24-deft	W	378	500	585	750	860	1000	1140	1285
Classe climatica / Climate Class	ISO 23953-2	3 - M1							
Superficie espositiva / Display surface	m²	0,84	1,13	1,69	2,25	2,81	3,38	3,94	4,50
Carico uniformemente distribuito piani esposizione / Uniformly distributed load display surface	Kg/m²	105							
Controllo / Control	ELECTRONIC	WOW Touch Control							

<b>EBONY H-COMBI</b>	L (cm)*	62,5	93,7	125	156,2	187,5			
<b>Consumo annuo / Annual Energy Consumption</b>	<b>kWh/a</b>	<b>8.239</b>	<b>9.051</b>	<b>14.375</b>	<b>15.187</b>	<b>22.133</b>			
Potenza Elettrica mobile / Electric Power cabinet	W	1881	3444	5470	5779	5053			
Controllo / Control	ELECTRONIC	Easy Touch Control							

<b>EBONY S-CONCEPT</b>	L (cm)*	93,7	125	187,5	250	312,5	375	437,5	500
<b>Consumo annuo / Annual Energy Consumption (remote version)</b>	<b>kWh/a</b>	<b>193</b>	<b>232</b>	<b>311</b>	<b>389</b>	<b>468</b>	<b>548</b>	<b>626</b>	<b>704</b>
Potenza frigorifera Ø 24-deft / Refrigeration Power Ø 24-deft	W	380	500	611	710	880	1020	1150	1300
Classe climatica / Climate Class	ISO 23953-2	3 - M2							
Superficie espositiva / Display surface	m²	0,73	0,97	1,45	1,94	2,42	2,91	3,39	3,88
Carico uniformemente distribuito piani esposizione / Uniformly distributed load display surface	Kg/m²	105							
Controllo / Control	ELECTRONIC	WOW Touch Control							

<b>EBONY G-CONCEPT</b>	L (cm)*	93,7	125	187,5	250	312,5	375	437,5	500
<b>Consumo annuo / Annual Energy Consumption (remote version)</b>	<b>kWh/a</b>	<b>1.016</b>	<b>1.055</b>	<b>1.257</b>	<b>1.335</b>	<b>1.537</b>	<b>1.616</b>	<b>1.817</b>	<b>1.895</b>
Potenza frigorifera Ø 24-deft / Refrigeration Power Ø 24-deft	W	444	578	689	855	1000	1150	1300	1467
Classe climatica / Climate Class	ISO 23953-2	3 - M1							
Superficie espositiva / Display surface	m²	0,80	1,06	1,59	2,13	2,66	3,19	3,72	4,25
Carico uniformemente distribuito piani esposizione / Uniformly distributed load display surface	Kg/m²	105							
Controllo / Control	ELECTRONIC	WOW Touch Control							

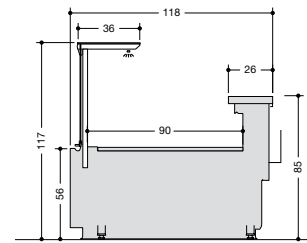
<b>IL MAGNIFICO TOWER</b>	L (cm)*	93,7	125	156,2	187,5	250			
<b>Consumo annuo / Annual Energy Consumption</b>	<b>kWh/a</b>	<b>4.742</b>	<b>6.148</b>	<b>7.027</b>	<b>7.750</b>	<b>9.037</b>			
Potenza frigorifera Ø 24-deft / Refrigeration Power Ø 24-deft	W	620	780	941	1130	1500			
Classe climatica / Climate Class	ISO 23953-2	3 - M1							
Superficie espositiva / Display surface	m²	1,70	2,26	2,83	3,39	4,53			
Carico uniformemente distribuito piani esposizione / Uniformly distributed load display surface	Kg/m²	105							
Controllo / Control	ELECTRONIC	WOW Touch Control							

L (cm)\*= Lunghezza senza spalle.  
Spessore 1 spalla: 4 cm.  
L (cm)\*= Length without endwalls.  
Thickness 1 endwall: 4 cm.

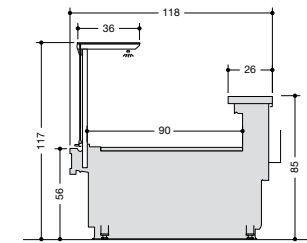


\* Le informazioni relative alla classe energetica (secondo le normative Ecodesign 2019/2024 ed Energy Labelling 2019/2018) qui riportate sono riferite a modelli standard e precise configurazioni ed allestimenti del prodotto. La brochure si basa sulle informazioni disponibili al momento della sua pubblicazione. Ogni configurazione diversa da quella ivi rappresentata potrebbe comportare un cambiamento sensibile delle informazioni relative alla classe energetica. Per maggiori informazioni vi invitiamo a consultare il Registro Europeo dei Prodotti per l'Etichettatura Energetica EPREL oppure rivolgerci al nostro servizio crioccare@criocabin.com.

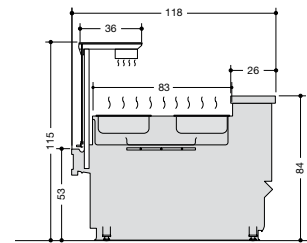
\* **EN** The energy class information (according to the Ecodesign 2019/2024 and the Energy Labelling 2019/2018 standards) given here refers to standard models and precise product configurations and fittings. The brochure is based on the information available at the time of its publication. Any configuration other than that depicted therein may result in a significant change in the energy class information. For further information, please consult the European Product Registry for Energy Labelling (EPREL) or contact our service crioccare@criocabin.com.



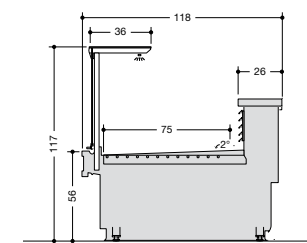
EBONY A



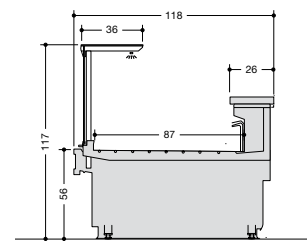
EBONY D



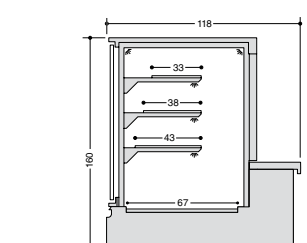
EBONY H-COMBI



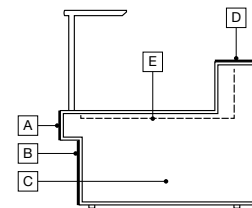
EBONY S-CONCEPT



EBONY G-CONCEPT



IL MAGNIFICO TOWER



= Color at Extra cost  
= Colore con sovrapprezzo  
= Supplément couleur  
= Farb mit Aufpreis

<b>A</b>	Standard Colors RAL* Special Colors* Matt Colors* I301* I302* I303*
<b>B</b>	Standard Colors RAL* Special Colors* Matt Colors* I301* I302* I303*
<b>C</b>	D90 D97 Other Standard Colors* RAL* Special Colors* Matt Colors* I301* I302* I303*
<b>D</b>	I303*
<b>E</b>	I301 RAL* Matt Colors*

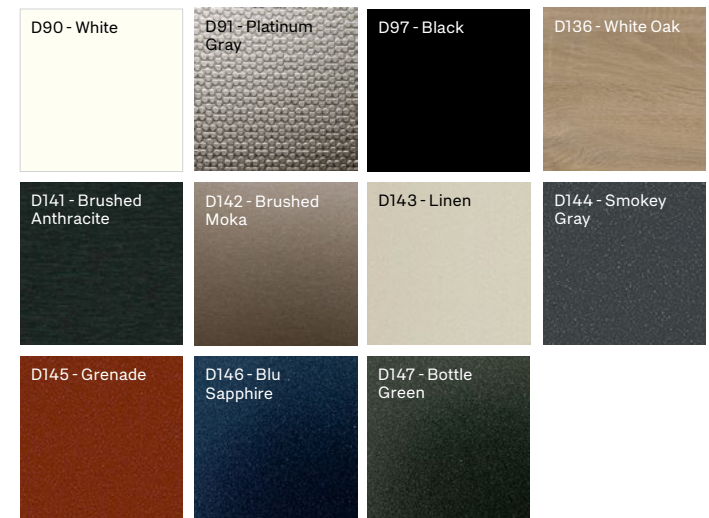
Le caratteristiche tecniche potranno subire modifiche senza preavviso.

**EN** Technical details could be changed without notice.

**FR** Les caractéristiques techniques pourraient subir des modifications sans préavis.

**DE** Änderungen vorbehalten.

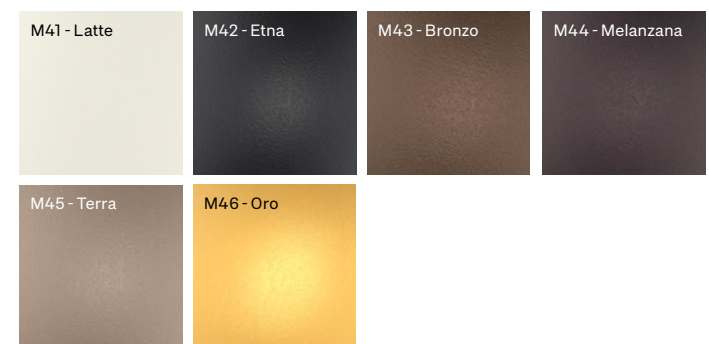
Standard Colors



Special Colors



Matt Colors



# EBONY

SIMPLICITY  
ON DISPLAY

CRIOCABIN  
TASTE PRESENTATION

**CRIOCABIN SpA**

35037 Praglia di Teolo - Padova (Italy)  
Z.I. Selve - Via S. Benedetto, 40/A

Tel. +39 049 9909100  
[www.criocabin.com](http://www.criocabin.com)