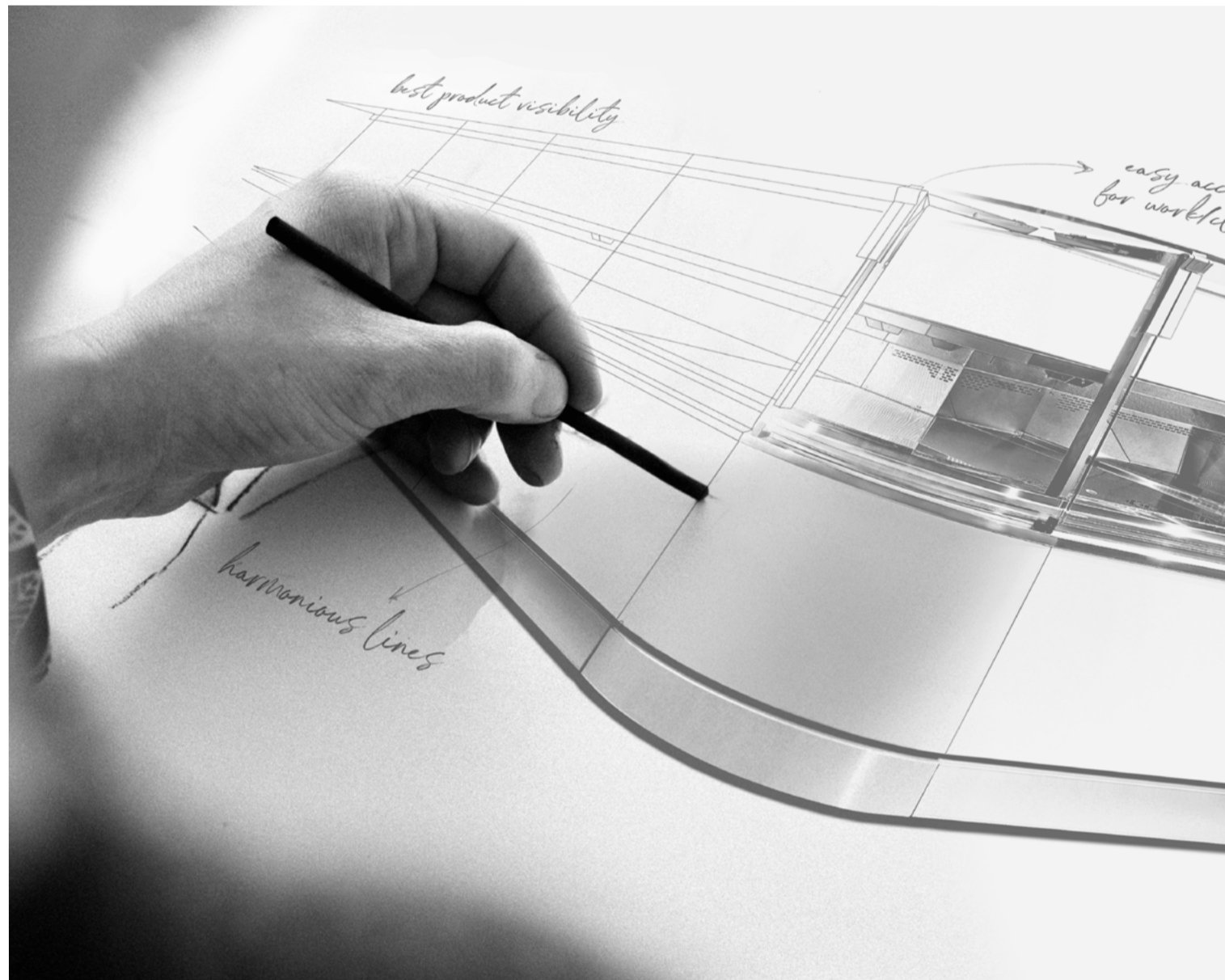


ENIXE
PURE
ICONIC
DESIGN

CRIOCCABIN
TASTE PRESENTATION





Enixe is a next generation refrigerated counter. The perfect blend of design and technology.

Every aspect of Enixe has been designed to highlight food products, ensure optimum food preservation, and deliver the utmost versatility in terms of settings and use.

Everyone has his own way of working. Enixe enhances it.

IT

Enixe è un banco refrigerato di nuova generazione che fonde perfettamente design e tecnologia.

Ogni dettaglio di Enixe è concepito per dare il miglior risalto agli alimenti, garantirne la perfetta conservazione, e per offrire massima versatilità di configurazione ed utilizzo.

Ognuno ha il proprio stile di lavoro. Enixe lo evolve.



Turn Our Best
Into Your Best Seller.

Esponi i tuoi prodotti, con stile.

Enixe è studiato per dare massima esposizione alla merce, grazie alle sue linee semplici e alle superfici piane.



EN Showcase your products, with style.

Enixe has been designed to enhance the display of goods, thanks to its clean lines and plain surfaces.

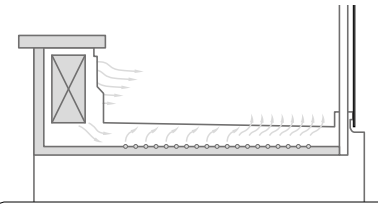
FR Exposez tous vos produits avec style.

Enixe est conçu pour donner un maximum de visibilité à la marchandise, grâce à ses lignes simples et aux surfaces planes.

DE Präsentieren Sie Ihre Waren mit Stil.

Das Design von Enixe mit seinen schlichten Linien und geraden Flächen ermöglicht eine optimale Warenpräsentation.

ENIXE S CONCEPT



S Concept System.
Refrigerazione Statica
con fondo refrigerato
ideale per la carne.
Umidità garantita.



**Facile da pulire,
facilissimo da allestire.**

I vetri apribili verso l'alto rendono
comoda la manutenzione
e semplice l'accesso al piano
espositivo per la personalizzazione
del visual merchandising.

**EN
S Concept.**

Static Refrigeration with
refrigerated base. Ideal for meat.
Humidity level guaranteed.

**FR
S Concept.**

Réfrigération statique avec fond
réfrigéré, idéal pour les viandes.
Humidité garantie.

**DE
S Concept.**

Statische Kühlung mit
Unterbaukühlung, ideal für
Fleischwaren. Die Feuchtigkeit
ist gewährleistet.

P73
Black Vulcano



EN

**Easy to clean and very easy
to set up.**

The glass doors open upwards,
enabling easy cleaning
and access to the display
base for customised visual
merchandising.

FR

**Facile à nettoyer, très facile
à aménager.**

Grâce aux vitrines relevables,
la maintenance est très
aisée et l'accès à la tablette
d'exposition est très simple
pour personnaliser le visual
merchandising.

DE

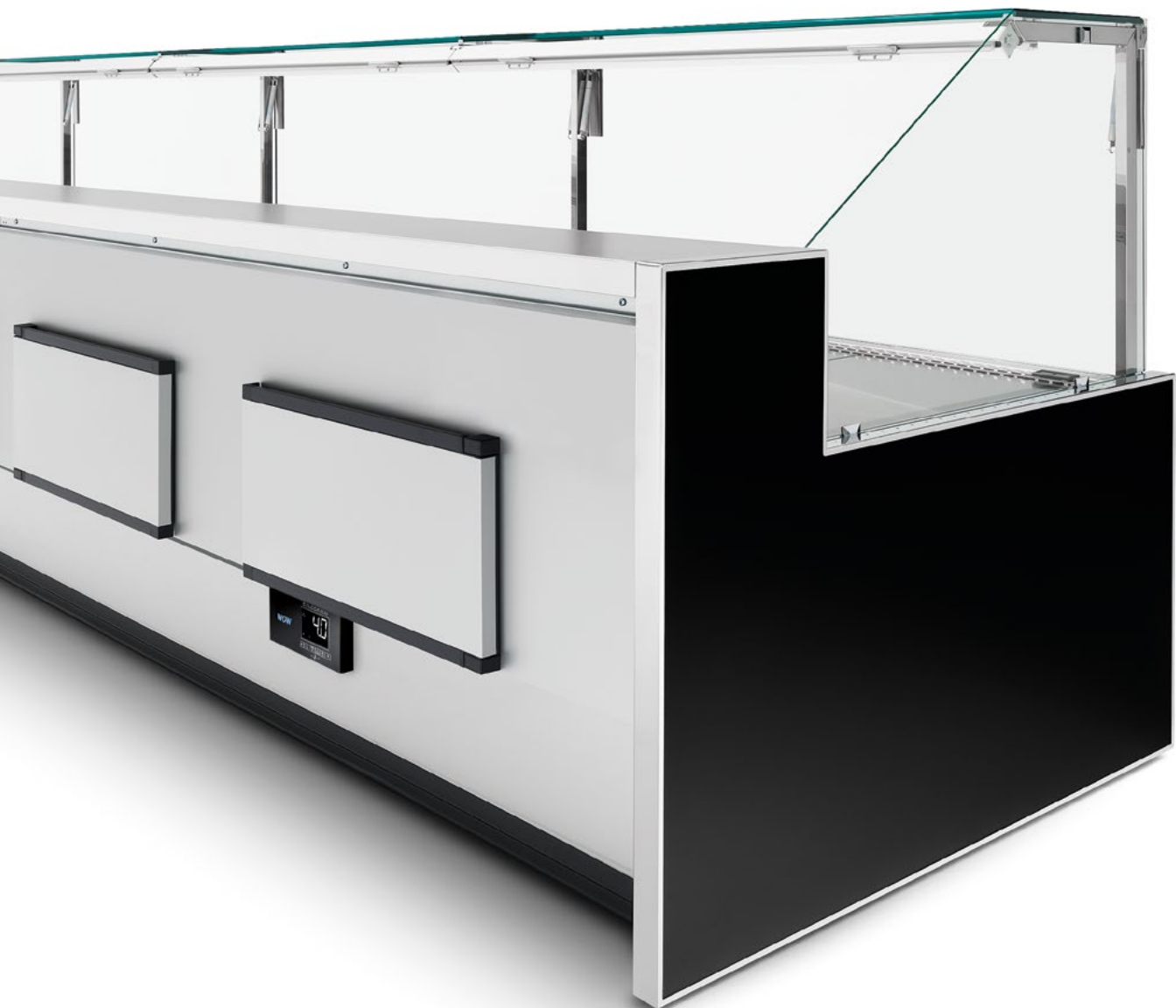
**Leicht zu reinigen,
einfach aufzubauen.**

Die aufklappbaren Frontscheiben
erlauben die bequeme Wartung,
einen praktischen Zugriff auf
die Auslageebene und die
Personalisierung des Visual
Merchandising.

P85
Metallic Argento



WOW TOUCH CONTROL



Controlla e gestisci a distanza grazie all'app WOW remote.

La tecnologia WI-FI NUCLEUS trova in WOW, il nuovo quadro elettronico comandi, l'interfaccia perfetta per il monitoraggio a distanza delle rilevazioni di performance dei prodotti Criocabin connessi in rete tramite App scaricabile da Android.

I dati rimangono in archivio e consultabili per oltre dodici mesi e fanno parte di un cammino aziendale per rendere la tecnologia accessibile a tutti i clienti che scelgono Criocabin.

EN Remote control and setting through the app WOW remote.

In WOW, WI-FI NUCLEUS technology has found a new electronic control panel, the perfect interface to remotely monitor the performance of any Criocabin product connected to the network through the App - downloadable from Android.

Data is stored and can be accessed for over twelve months. This is part of the company's process for making technology more accessible to all its customers who choose Criocabin.

FR Contrôler et gérer à distance grâce à l'app WOW remote.

Grâce à WOW, le nouveau tableau électronique de commandes, la technologie WI-FI NUCLEUS présente l'interface parfaite pour le contrôle à distance des relevés de performance des produits Criocabin connectés en réseau au moyen de l'app téléchargeable d'Android.

Les données restent dans l'archive et peuvent être consultées pendant plus de douze mois et font partie d'un procédé d'entreprise permettant de rendre la technologie accessible à tous les clients qui choisissent Criocabin.

DE Fernsteuerung und -verwaltung dank der app WOW remote.

Die Wi-Fi-Technologie von NUCLEUS erhält mit WOW, der neuen elektronischen Schalttafel, eine ideale Schnittstelle für die Fernüberwachung zwecks Leistungsermittlung der Produkte von Criocabin, die mittels einer auf Android herunterladbaren App vernetzt sind.

Die Daten werden im Archiv gespeichert und können mehr als 12 Monate lang eingesehen werden. Das entspricht der Philosophie des Unternehmens, die Technologie allen Kunden zugänglich zu machen, die sich für Criocabin entschieden haben.

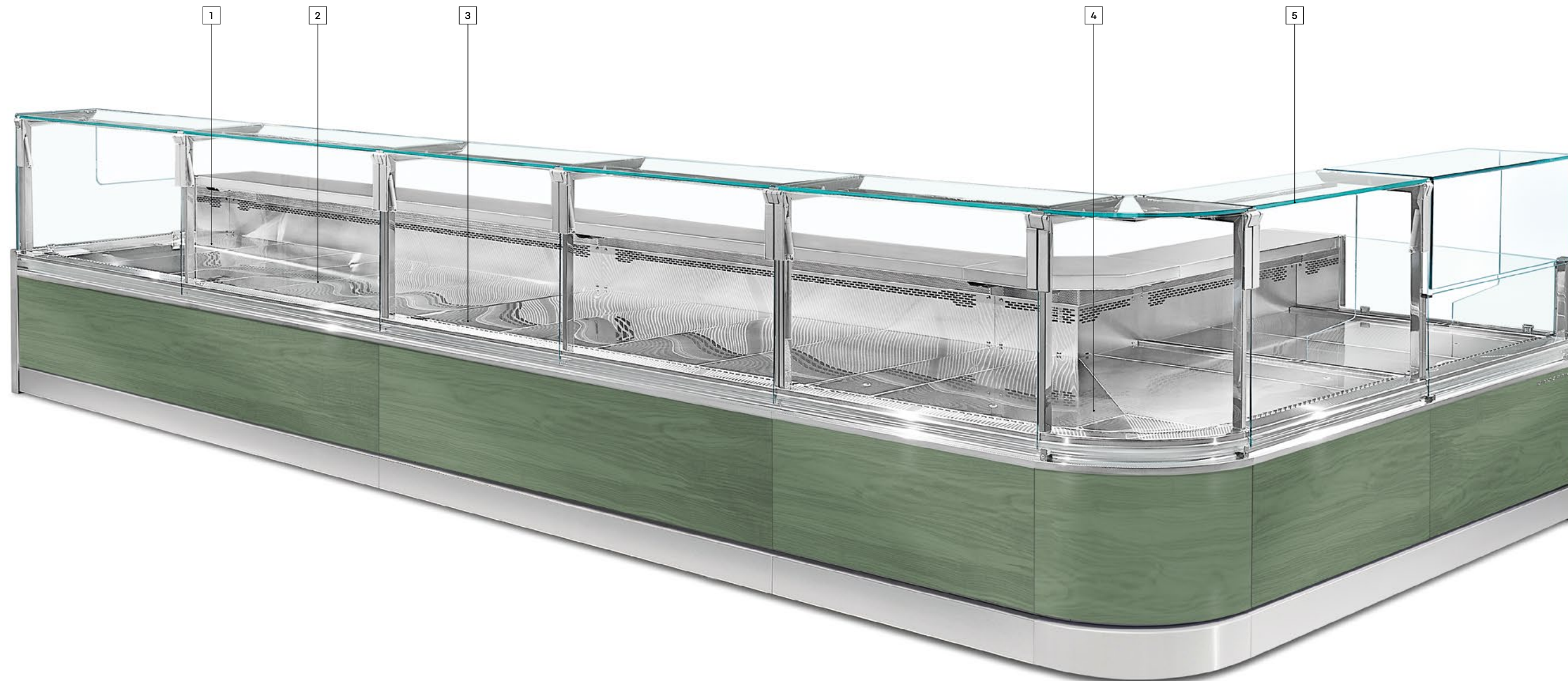
- 1** Interno del mobile in acciaio inox.
EN Stainless steel unit interior.
FR Intérieur de la vitrine en acier inox.
DE Innenverarbeitung des Möbels aus rostfreiem Edelstahl.

- 2** Refrigerazione ventilata con evaporatore trattato in cataforesi anticorrosione.
EN Ventilated refrigeration with evaporator treated with anti-corrosion cataphoresis.
FR Réfrigération ventilée avec évaporateur traité par cataphorèse anticorrosion.
DE Umluftkühlung mit Verdampfer mit korrosionsfester Kataphorese-Behandlung.

- 3** Sbrinamento ventilato con arresto del compressore.
EN Ventilated defrosting with compressor block.
FR Dégivrage ventilé avec arrêt du compresseur.
DE Umluftabtauung mit automatischem Stopp des Kompressors.

- 4** Angolo sferico 90° stretto.
EN 90° Narrow spherical corner.
FR Angle sphérique à 90°.
DE Sphärischer 90° Winkel mit enger Kurve.

- 5** Vetri apribili verso l'alto.
EN Lift-up glasses.
FR Glaces relevables.
DE Hebeglasscheibe.



6

illuminazione CRIOLED®.
EN CRIOLED® lighting.
FR Éclairage CRIOLED®.
DE CRIOLED®-Beleuchtung.

7

Montanti anteriori in acciaio inox cromato.
EN Front uprights in chromed stainless steel.
FR Supports antérieurs en acier inox chromé.
DE Frontstützen aus verchromtem Edelstahl.

8

Angoli sferici 90°-45° aperti e chiusi.
EN Spherical corners 90°-45° internal and external.
FR Angles sphériques 90°-45° fermés et ouverts.
DE Abgerundete Außen- und Innenwinkel 90°-45°.

9

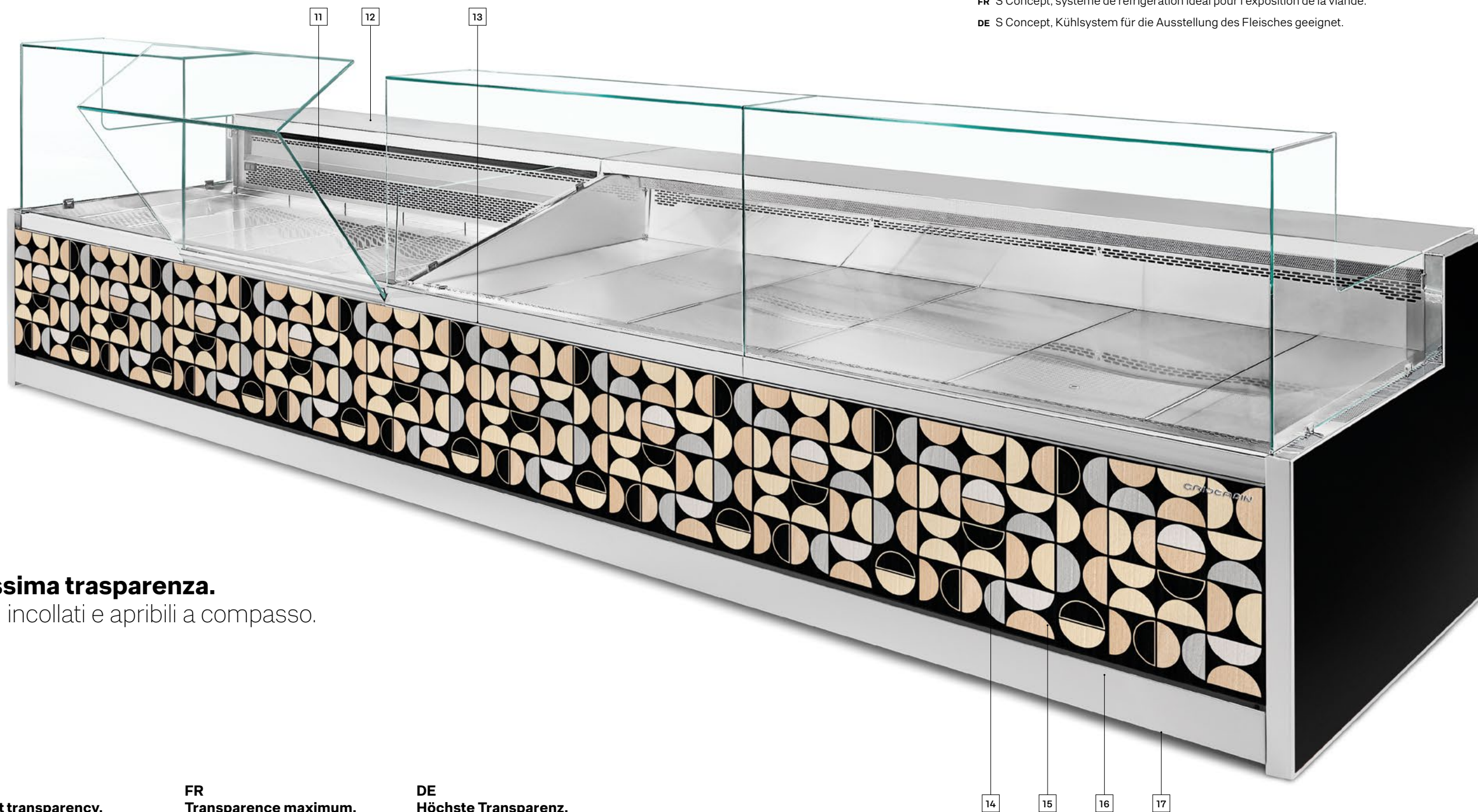
Versione 450 H-Combi caldo ventilato.
EN Hot Ventilated version 450 H-Combi.
FR Version 450 H-Combi chaude ventilée.
DE Belüftete Heizung Version 450 H-Combi.

10

Zoccolo in acciaio inox.
EN Bumper skirting in stainless Steel.
FR Plinthe en acier inox.
DE Staubsockel aus Edelstahl.



ENIXE K



Massima trasparenza.

Vetri incollati e apribili a compasso.

EN
Utmost transparency.
Bonded glass with
hinged opening.

FR
Transparence maximum.
Vitrines collées et relevables.

DE
Höchste Transparenz.
Geklebte, aufklappbare
Glasfronten.

11 S Concept, sistema di refrigerazione ideale per l'esposizione delle carni.
EN S Concept, refrigeration system ideal for meat displaying.
FR S Concept, système de réfrigération idéal pour l'exposition de la viande.
DE S Concept, Kühlsystem für die Ausstellung des Fleisches geeignet.

12 Piano di lavoro in acciaio inox antigraffio.
EN Working board in stainless steel scratchproof.
FR Tablette de travail en acier inox anti-rayure.
DE Arbeitsplatte aus kratzfestem Edelstahl.

13 Ventilazione frontale antiappannante.
EN Anti-fogging front and side ventilation.
FR Ventilation frontale antibuée.
DE Antibeschlag Frontumluftkühlung.

14 Mobile con gruppo frigorifero eco-friendly R290 (optional).
EN Display cabinet with R290 eco-friendly built-in unit (optional).
FR Vitrine avec groupe logé R290 eco-friendly (optional).
DE Steckerfertige Theke mit R290 eco-friendly (optional).

15 Frontale personalizzabile su richiesta.
EN Front frame customised upon request.
FR Corniche personnalisables sur requête.
DE Frontrahmen bei Anfrage.

16 Illuminazione frontale CRIOLED® (optional).
EN CRIOLED® front lighting (optional).
FR Éclairage frontal CRIOLED® (optional).
DE CRIOLED® Frontbeleuchtung (optional).

17 Profilo parapolvere sul perimetro del banco.
EN Dust profile all around the counter.
FR Profil antipoussière périmétral.
DE Staubsockel auf dem Perimeter der Theke.



18 Banco a servizio assistito che diventa a libero servizio facendo scorrere la struttura in vetro verso la parte inferiore.

EN Display cabinet with sliding upper structure switching from serve-over to self-service.

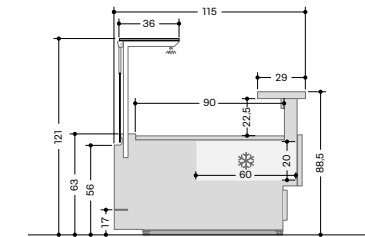
FR Vitrine avec système coulissant de la structure supérieure vers l'arrière qui se transforme en libre-service.

DE Bedienungstheke mit verschiebbare Glasvitrine nach hinten für Version Selbstbedienung.

Showcase Your Products.
Enhance Your Business.

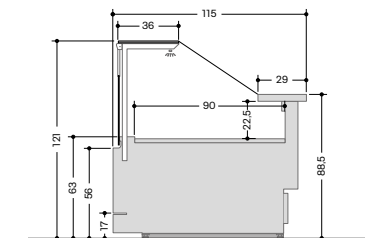


EN100	L (cm)*	93,7	125	187,5	250	312,5	375
Consumo Annuo / Annual Energy Consumption	kWh/a	1999	2490	3127	4433	4768	5355
Classe climatica / Climate Class	ISO 23953-2	3 - M2					
Superficie espositiva / Display surface	m ²	0,84	1,13	1,69	2,25	2,81	3,38
Gruppo frigorifero / Refrigeration unit	GAS	R290					
Controllo - banco senza gruppo frigorifero Control - cabinet without built-in refrigerator unit		Morsettiera / Terminal block					
Controllo - banco con gruppo frigorifero Control - cabinet with built-in refrigerator unit	ELECTRONIC	WOW Touch Control					



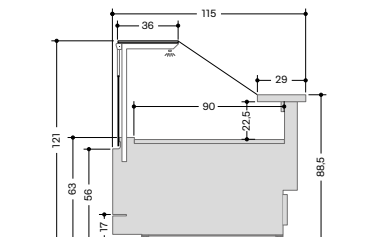
EN 100

EN200	L (cm)*	93,7	125	187,5	250	312,5	375
Consumo Annuo / Annual Energy Consumption	kWh/a	1850	2296	2890	3634	4260	4881
Classe climatica / Climate Class	ISO 23953-2	3 - M2					
Superficie espositiva / Display surface	m ²	0,84	1,13	1,69	2,25	2,81	3,38
Gruppo frigorifero / Refrigeration unit	GAS	R290					
Controllo - banco senza gruppo frigorifero Control - cabinet without built-in refrigerator unit		Morsettiera / Terminal block					
Controllo - banco con gruppo frigorifero Control - cabinet with built-in refrigerator unit	ELECTRONIC	WOW Touch Control					



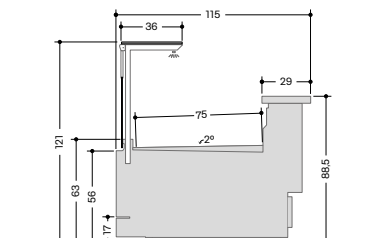
EN 200

EN250 M1	L (cm)*	93,7	125	187,5	250	312,5	375
Consumo Annuo / Annual Energy Consumption	kWh/a	1762	2208	2715	3916	-	-
Classe climatica / Climate Class	ISO 23953-2	3 - M1					
Superficie espositiva / Display surface	m ²	0,84	1,13	1,69	2,25	2,81	3,38
Gruppo frigorifero / Refrigeration unit	GAS	R290					
Controllo - banco senza gruppo frigorifero Control - cabinet without built-in refrigerator unit		Morsettiera / Terminal block					
Controllo - banco con gruppo frigorifero Control - cabinet with built-in refrigerator unit	ELECTRONIC	WOW Touch Control					



EN 250 M1

EN550 S-CONCEPT	L (cm)*	93,7	125	187,5	250	312,5	375
Consumo Annuo / Annual Energy Consumption (remote)	kWh/a	280	319	486	564	731	810
Classe climatica / Climate Class	ISO 23953-2	3 - M2					
Superficie espositiva / Display surface	m ²	0,84	1,13	1,69	2,25	2,81	3,38
Controllo - banco senza gruppo frigorifero Control - cabinet without built-in refrigerator unit		Morsettiera / Terminal block					



EN 550 S-CONCEPT

L (cm)*= Lunghezza senza spalle. Spessore 1 spalla: 4 cm.
L (cm)*= Length without endwalls. Thickness 1 endwall: 4 cm.

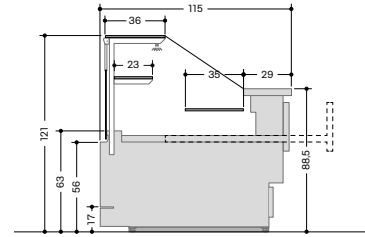
Le caratteristiche tecniche potranno subire modifiche senza preavviso.

EN Technical details could be changed without notice.

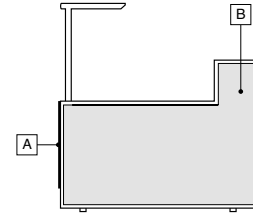
FR Les caractéristiques techniques pourraient subir des modifications sans préavis.

DE Änderungen vorbehalten.

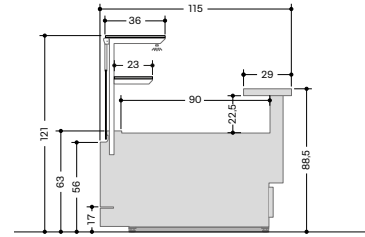
EN300	L (cm)*	125	187,5	375
Consumo Annuo / Annual Energy Consumption	kWh/a	1963	2599	4136
Classe climatica / Climate Class	ISO 23953-2		3 - H1	
Superficie espositiva / Display surface	m ²	1,56	2,34	4,69
Gruppo frigorifero / Refrigeration unit	GAS		R290	
Controllo - banco senza gruppo frigorifero Control - cabinet without built-in refrigerator unit			Morsettiera / Terminal block	
Controllo - banco con gruppo frigorifero Control - cabinet with built-in refrigerator unit	ELECTRONIC		WOW Touch Control	



EN 300



EN310	L (cm)*	125	187,5	375
Superficie espositiva / Display surface	m ²	1,41	2,12	4,24
Carico uniformemente distribuito piano esposizione / Uniformly distributed load dispaly surface:	kg/m ²		105	
Peso senza gruppo / Weight without refrigeration unit	kg	150	250	540

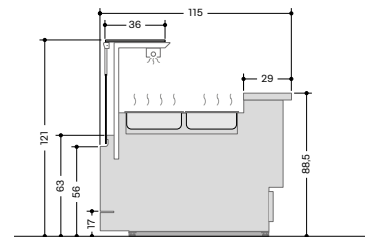


EN 310

A	Standard Colors RAL* Special Colors* Matt Colors* I301* I302* I303*
B	D91 D97 Other Standard Colors* RAL* Special Colors* Matt Colors* I301* I302* I303*

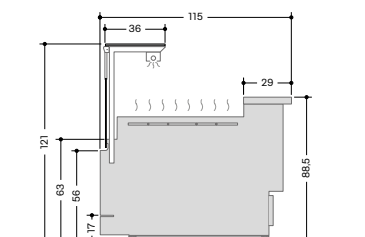
*= Colore con sovrapprezzo
*= Color at Extra cost
*= Supplément couleur
*= Farb mit Aufpreis

EN400	L (cm)*	125	187,5	250
Consumo Annuo / Annual Energy Consumption	kWh/a	8.935	14.454	17.870
Potenza elettrica mobile / Electric power cabinet	W	3400	5500	6800
Controllo / Control	ELECTRONIC		Easy Touch Control	
Vetri apribili (quantità) / Opening Glasses (quantity)		1	2	2
Peso mobile / Cabinet weight	kg	260	355	450



EN 400

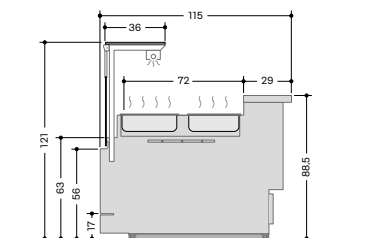
EN410	L (cm)*	125	187,5	250
Consumo Annuo / Annual Energy Consumption	kWh/a	6.570	10.512	13.140
Potenza elettrica mobile / Electric power cabinet	W	2500	4000	5000
Controllo / Control	ELECTRONIC		Easy Touch Control	
Vetri apribili (quantità) / Opening Glasses (quantity)		1	2	2
Peso mobile / Cabinet weight	kg	250	340	440



EN 410



EN450 H-COMBI	L (cm)*	125	187,5	250
Consumo Annuo / Annual Energy Consumption	kWh/a	12.720	20.130	25.439
Potenza elettrica mobile / Electric power cabinet	W	4840	7660	9680
Controllo / Control	ELECTRONIC		Easy Touch Control	
Vetri apribili (quantità) / Opening Glasses (quantity)		1	2	2
Peso mobile / Cabinet weight	kg	165	200	250



EN 450 H-COMBI

Standard Colors			
D90 - White	D91 - Platinum Gray	D97 - Black	D136 - White Oak
D141 - Brushed Anthracite	D142 - Brushed Moka	D143 - Linen	D144 - Smokey Gray
D145 - Grenade	D146 - Blu Sapphire	D147 - Bottle Green	

Special Colors			
P61 - White Perla	P51 - Papaya Orange	P52 - Grano	P53 - Rose Brown
P54 - Must	P84 - Red Tiziano	P55 - Rosa Mountbatten	P56 - Tea Leaf
P57 - Uovo di Pettirosso	P58 - Blu Lavagna	P59 - London Gray	P73 - Black Vulcano

Matt Colors			
M41 - Latte	M42 - Etna	M43 - Bronzo	M44 - Melanzana
M45 - Terra	M46 - Oro		

* **EN** The energy class information (according to the Ecodesign 2019/2024 and the Energy Labelling 2019/2018 standards) given here refers to standard models and precise product configurations and fittings. The brochure is based on the information available at the time of its publication. Any configuration other than that depicted therein may result in a significant change in the energy class information. For further information, please consult the European Product Registry for Energy Labelling (EPREL) or contact our service criocare@criocabin.com.

* Le informazioni relative alla classe energetica (secondo le normative Ecodesign 2019/2024 ed Energy Labelling 2019/2018) qui riportate sono riferite a modelli standard e precise configurazioni ed allestimenti del prodotto. La brochure si basa sulle informazioni disponibili al momento della sua pubblicazione. Ogni configurazione diversa da quella ivi rappresentata potrebbe comportare un cambiamento sensibile delle informazioni relative alla classe energetica. Per maggiori informazioni vi invitiamo a consultare il Registro Europeo dei Prodotti per l'Etichettatura Energetica EPREL oppure rivolgervi al nostro servizio criocare@criocabin.com.

ENIXE

PURE
ICONIC
DESIGN

CRIOCABIN
TASTE PRESENTATION

CRIOCABIN SpA

35037 Praglia di Teolo - Padova (Italy)
Z.I. Selve - Via S. Benedetto, 40/A

Tel. +39 049 9909100
www.criocabin.com