

EUFORIA

THE EVOLUTION
OF A CLASSIC

CRIOCCABIN
TASTE PRESENTATION





Euforia is the evolution of the gastronomy refrigerated counter. With a square display case and angled corners, it reinterprets a Criocabin classic. A refrigerated counter for food with clean and rational shapes, with a trendy design and excellent value for money.

IT

Euforia è l'evoluzione del banco refrigerato per gastronomia, l'espositore che, con vetrina quadra e angoli a spigolo, reinterpreta un classico Criocabin.

Un banco refrigerato per alimentari dalle forme pulite e razionali, con un design di tendenza e un ottimo rapporto qualità-prezzo.



Rational Shapes, Trendy Design

Design and versatility.

Euforia is suitable for different uses and needs: from pastries, refrigerated and not, to meat products. The inside of the cabinet is made of black painted sheet metal, RAL 9005. The corners can be chosen as either open or closed at 90°.

IT

Design e versatilità.

Euforia è adatto a diversi usi e diverse esigenze: dalla pasticceria, refrigerata e non, alla macelleria. L'interno del mobile è in lamiera verniciata nera RAL 9005. Gli angoli possono essere a scelta, aperti o chiusi a 90°.

FR

Design et polyvalence.

Euforia s'adapte à une variété d'utilisations et d'exigences : de la pâtisserie réfrigérée et non réfrigérée à la boucherie. L'intérieur du meuble est en tôle peinte en noir RAL 9005. Les angles peuvent être choisis, ouverts ou fermés à 90°.

DE

Design und Vielseitigkeit.

Euforia eignet sich für eine Vielzahl von Anwendungen und Anforderungen: von der gekühlten und ungekühlten Feinbäckerei bis zur Metzgerei. Das Innere des Schrankes besteht aus schwarz lackiertem Blech, RAL 9005. Die Ecken können wahlweise offen oder in einem 90°-Winkel geschlossen sein.

1 Stainless steel worktop.
IT Piano di lavoro in acciaio inox.
FR Tablette de travail en acier inox.
DE Arbeitsplatte aus Edelstahl.

2 Lift-up glasses.
IT Vetro apribile verso l'alto.
FR Verre ouvrable vers le haut.
DE Hebeverglasung.

3 Evaporator treated with anti-corrosion cataphoresis.
IT Evaporatore trattato in cataforesi anticorrosione.
FR Évaporateur traité per cataphorèse.
DE Korrosionsfester Kataphorese-Behandlung.

4 Anti-fogging frontal ventilation
IT Ventilazione frontale antiappannante.
FR Ventilation frontale antibuée.
DE Anti-Beschlag Frontbelüftung.

5 Display area and glass canopy in RAL 9005 Black.
IT Zona esposizione e vetrina verniciata nero RAL 9005.
FR Zone d'exposition et vitrine laqué noir RAL 9005.
DE Schwarz RAL 9005 lackierte Auslagebereich und Vitrine.

6 Ventilated refrigeration.
IT Refrigerazione ventilata.
FR Réfrigération ventilée.
DE Durchlüftete Kühlung.



P53
Rose Brown

7 LED 4000°K lighting profile and sliding plexiglass in black anodized aluminum.

IT Profilo porta-LED 4000°K e scorri plexiglas in alluminio anodizzato nero.

FR Profilé LED 4000°K avec rail pour plexiglas en aluminium anodisé noir.

DE 4000°K LED-Profil und Plexiglas-Schiebesystem aus schwarz eloxiertem Aluminium.

8 Cabinet with built-in refrigerator unit equipped with Easy Touch Control.

IT Mobile con gruppo frigorifero incorporato dotato di Easy Touch Control.

FR Meuble avec groupe frigo incorporé équipé de panneau électrique Easy Touch Control.

DE Möbel mit eingebautem Kühlaggregat, mit Easy Touch Control elektronischer Schalttafel ausgestattet.

9 NUCLEUS: extra charge for remote control via Wi-Fi (optional).

IT NUCLEUS: supplemento controllo remoto via Wi-Fi (optional).

FR NUCLEUS: supplément pour contrôle à distance via Wi-Fi (option).

DE NUCLEUS: Zuschlag für Remotesteuerung via Wi-Fi (optional).

10 Frontal bumper skirting D97 Black.

IT Zoccolo inferiore frontale D97 Black.

FR Plinthe avant D97 Black.

DE Vorderer D97 Black.



Adapt It to Your Every Need

Discover More



EY100	L (cm)*	125	187,5	250	312,5	375
Consumo annuo / Annual Energy Consumption	kWh/a	2.296	3.027	3.952	4.465	5.156
Classe climatica / Climate Class	ISO 23953-2	3 - M2				
Superficie espositiva / Display surface	m ²	1,13	1,69	2,25	2,81	3,38
Carico uniformemente distribuito piano esposizione / Uniformly distributed load display surface	kg/m ²	105				
Controllo - banco senza gruppo frigorifero Control - cabinet without built-in refrigerator unit		Morsettiera/Terminal block				
Controllo - banco con gruppo frigorifero Control - cabinet with built-in refrigerator unit	ELECTRONIC	Easy Touch Control				

EY200	L (cm)*	125	187,5	250	312,5	375
Consumo annuo / Annual Energy Consumption	kWh/a	2.296	2.890	3.634	4.260	4.881
Classe climatica / Climate Class	ISO 23953-2	3 - M2				
Superficie espositiva / Display surface	m ²	1,13	1,69	2,25	2,81	3,38
Carico uniformemente distribuito piano esposizione / Uniformly distributed load display surface	kg/m ²	105				
Controllo - banco senza gruppo frigorifero Control - cabinet without built-in refrigerator unit		Morsettiera/Terminal block				
Controllo - banco con gruppo frigorifero Control - cabinet with built-in refrigerator unit	ELECTRONIC	Easy Touch Control				

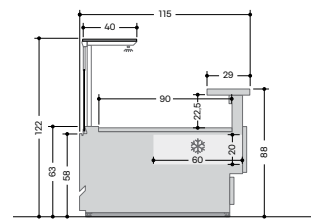
EY450 H-COMBI	L (cm)*	125	187,5	250
Consumo annuo / Annual Energy Consumption	kWh/a	12.720	20.130	25.439
Potenza elettrica mobile / Electric power cabinet	W	4840	7660	9680
Controllo / Control	ELECTRONIC	Easy Touch Control		

EY400	L (cm)*	125	187,5	250
Consumo annuo / Annual Energy Consumption	kWh/a	8.935	14.454	17.870
Potenza elettrica mobile / Electric power cabinet	W	3400	5500	6800
Controllo / Control	ELECTRONIC	Easy Touch Control		

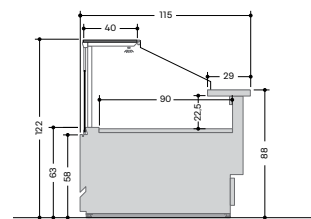
EY410	L (cm)*	125	187,5	250
Consumo annuo / Annual Energy Consumption	kWh/a	6.570	10.512	13.140
Potenza elettrica mobile / Electric power cabinet	W	2500	4000	5000
Controllo / Control	ELECTRONIC	Easy Touch Control		

L (cm)*= Lunghezza senza spalle. Spessore 1 spalla: 4 cm.
L (cm)*= Length without endwalls. Thickness 1 endwall: 4 cm.

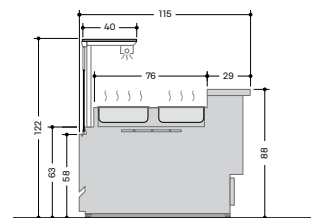
Le caratteristiche tecniche potranno subire modifiche senza preavviso.
EN Technical details could be changed without notice.
FR Les caractéristiques techniques pourraient subir des modifications sans préavis.
DE Änderungen vorbehalten.



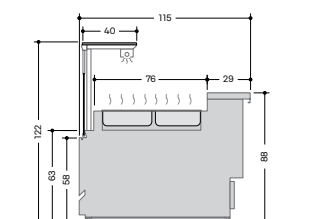
EY100



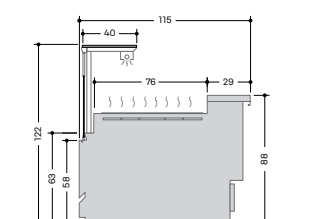
EY200



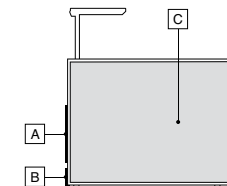
EY450 H-COMBI



EY400



EY410



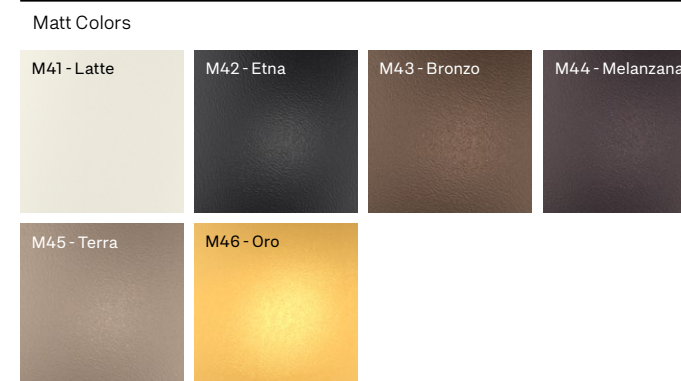
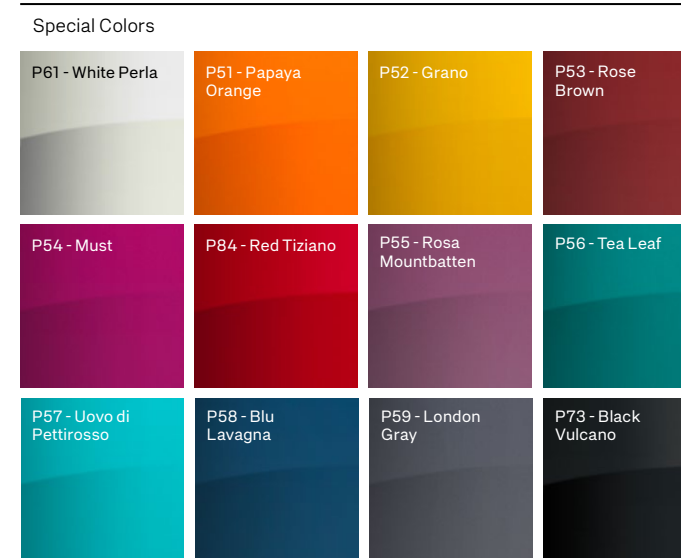
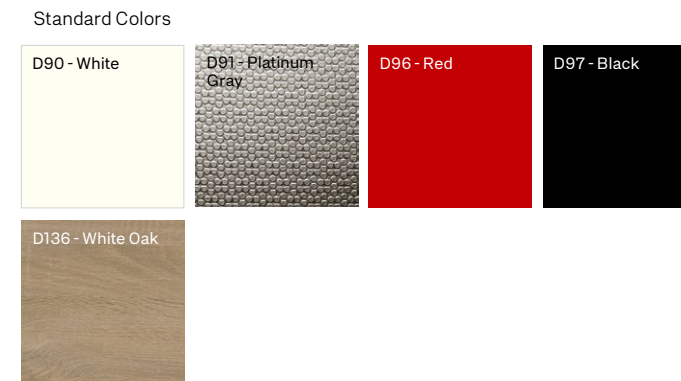
A	Standard Colors RAL* Special Colors* Matt Colors* I301* I303*
B	D91 I301*
C	D91 D97 Other Standard Colors*

*= Colore con sovrapprezzo
*= Color at Extra cost
*= Supplément couleur
*= Farb mit Aufpreis



* Le informazioni relative alla classe energetica (secondo le normative Ecodesign 2019/2024 ed Energy Labelling 2019/2018) qui riportate sono riferite a modelli standard e precise configurazioni ed allestimenti del prodotto. La brochure si basa sulle informazioni disponibili al momento della sua pubblicazione. Ogni configurazione diversa da quella ivi rappresentata potrebbe comportare un cambiamento sensibile delle informazioni relative alla classe energetica. Per maggiori informazioni vi invitiamo a consultare il Registro Europeo dei Prodotti per l'Etichettatura Energetica EPREL oppure rivolgerci al nostro servizio criocare@criocabin.com.

* **EN** The energy class information (according to the Ecodesign 2019/2024 and the Energy Labelling 2019/2018 standards) given here refers to standard models and precise product configurations and fittings. The brochure is based on the information available at the time of its publication. Any configuration other than that depicted therein may result in a significant change in the energy class information. For further information, please consult the European Product Registry for Energy Labelling (EPREL) or contact our service criocare@criocabin.com.



EUFORIA

THE EVOLUTION OF A CLASSIC

CRIOCABIN
TASTE PRESENTATION