

EXTRA

TRENDY ENTRY LEVEL

CRIDCABIN
TASTE PRESENTATION





Extra is a counter with a refrigerated display case for cold cuts, cheeses and gastronomy with an affordable price and attractive design.

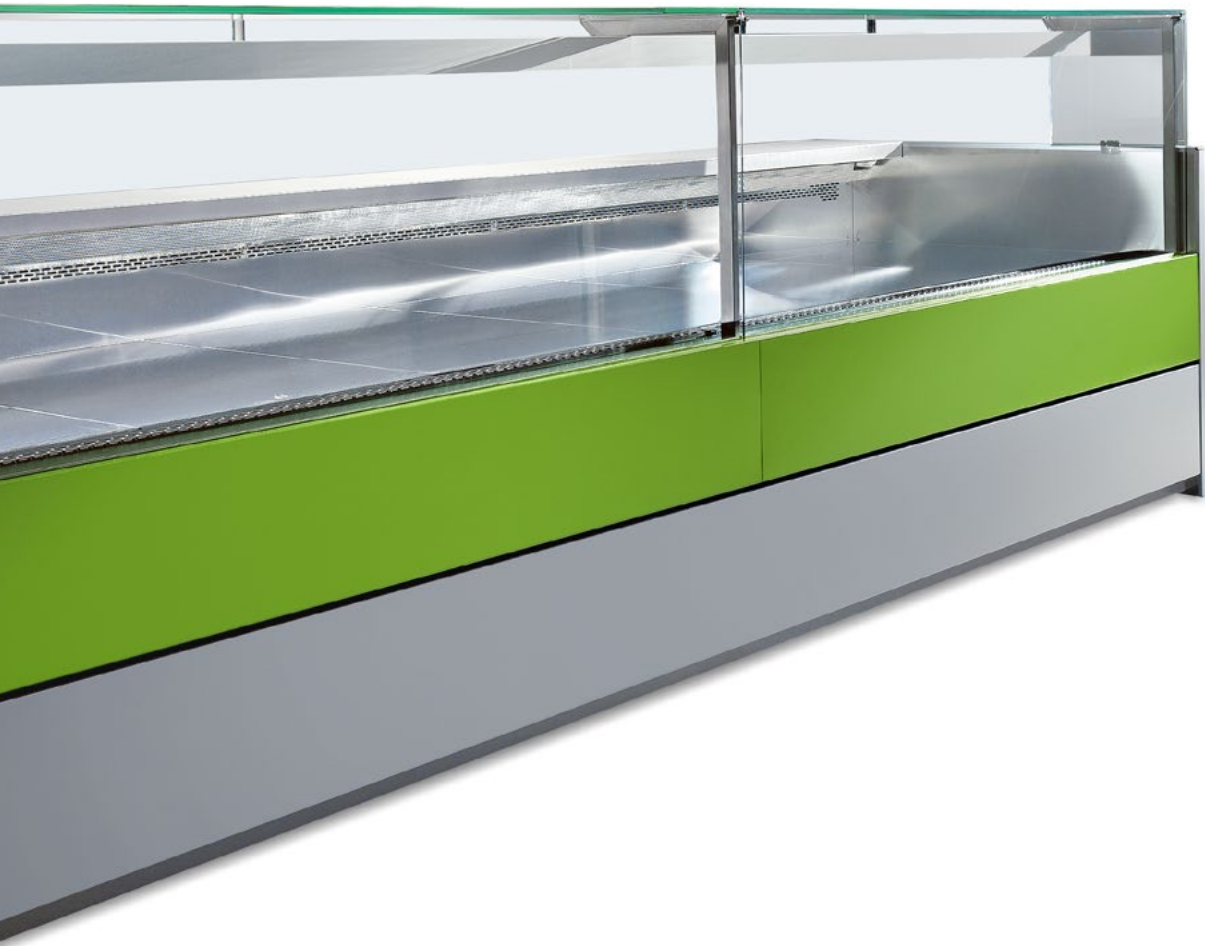
It can be easily integrated with the interiors of any store. It is equipped with a straight window with angled corners and a hinged opening.

IT

Extra è il banco refrigerato per salumi, formaggi e gastronomia dal prezzo accessibile e dal design accattivante.

Facilmente integrabile con l'arredamento di ogni negozio, è dotato di vetrina dritta apribile a compasso e con angoli a spigolo.

P67 Green Tónico



P70 Azure Atollo



Versatility. Accessibility. Style.

Non solo refrigerazione.

Grazie al sistema H-Combi, Extra è disponibile anche in versione caldo ventilato. È dotato di una zona esposizione con vaschette gastronomia, di plafoniera riscaldante superiore e di vaschetta interna per l'evaporazione dell'acqua con controllo dedicato.

EN Not only refrigeration.

Thanks to the H-Combi system, Extra is also available in a hot ventilated version. It is equipped with a display area with gastronomy trays, an upper heat light and an internal tray for water evaporation with dedicated control.

FR Pas seulement une réfrigération.

Grâce au système H-Combi, Extra est aussi disponible dans la version chaude ventilée. Il est équipé d'une zone d'exposition avec des bacs pour des plats préparés, d'un plafonnier supérieur chauffant et d'un bac interne pour l'évaporation de l'eau avec un contrôle dédié.

DE Nicht nur Kühlung.

Dank des Systems H-Combi ist Extra auch in der Ausführung für belüftetes Erhitzen erhältlich. Die Kühltheke verfügt über einen Auslagebereich mit Schalen für die Gastronomie, eine Heizleuchte an der Oberseite und eine interne Wanne für das verdunstete Wasser mit separater Steuerung.

1 Illuminazione LED 4000 °K.
EN LED lighting white 4000 °K.
FR Éclairage LED 4000 °K blanc.
DE LED-Beleuchtung wei 4000 °K.

2 Frontale personalizzabile su richiesta del cliente (optional).
EN Front panel customised upon customer request (optional).
FR Décor frontal personnalisable sur requête du client (optional).
DE Individuell gestaltbare Frontpaneel bei Anfrage des Kunden (optional).

3 Evaporatore trattato in cataforesi.
EN Evaporator handled with cataphoresis.
FR Évaporateur traité à la cataphorèse.
DE Verdampfer mit Kataforese.

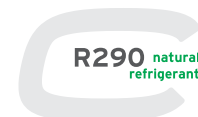
4 Refrigerazione ventilata con potenziometro per regolazione della portata.
EN Ventilated refrigeration with potentiometer to adjust air flow rate.
FR Réfrigération ventilée avec potentiomètre pour régulation du débit d'air.
DE DEDurchlüftete Kühlung mit Potentiometer für die Einstellung der Luftmenge.



5 Gruppo frigorifero (a richiesta).
EN Built-in unit (upon request).
FR Groupe logé (sur requête).
DE Steckerfertige Theke (nach Wahl).

6 Piano di lavoro in acciaio inox.
EN Working board in stainless steel.
FR Plan de travail en acier inoxydable.
DE Arbeitsplatte aus rostfreiem Edelstahl.

7 Canalizzabile.
EN Multiplexable.
FR Canalisable.
DE Zusammenbaubar.



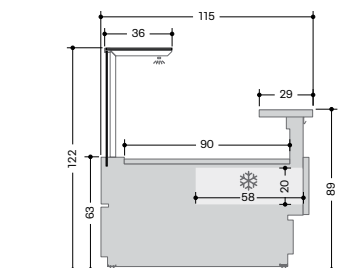
Quality Has Never Been So Achievable

| | | | | | | | |
|--|-------------------|--------------------|-------------|-------------|-------------|-------------|-------------|
| EX 100 | L (cm)* | 937 | 125 | 187.5 | 250 | 312.5 | 375 |
| Consumo annuo / Annual Energy Consumption | kWh/a | 1911 | 2402 | 2951 | 4258 | 4505 | 5092 |
| Classe climatica / Climate Class | (ISO23953-2) | 3 - M2 | | | | | |
| Superficie espositiva / Display surface | m ² | 0,84 | 1,13 | 1,69 | 2,25 | 2,81 | 3,38 |
| Carico uniformemente distribuito piano esposizione / Uniformly distributed load display surface: | kg/m ² | 105 | | | | | |
| Tipologia gas per mobili con gruppo / Gas type for self contained cabinet | GAS | R290 | | | | | |
| Controllo / Control | ELECTRONIC | Easy Touch Control | | | | | |

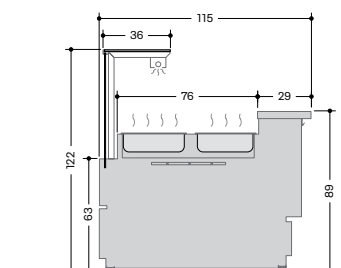
| | | | | |
|---|--------------|--------------------|---------------|---------------|
| EX 450 H-COMBI | L (cm)* | 125 | 187.5 | 250 |
| Consumo annuo / Annual Energy Consumption | kWh/a | 12.720 | 20.130 | 25.439 |
| Potenza elettrica mobile / Electric power cabinet | W | 4840 | 7660 | 9680 |
| Controllo / Control | ELECTRONIC | Easy Touch Control | | |

| | | | | |
|---|--------------|--------------------|---------------|---------------|
| EX 400 | L (cm)* | 125 | 187.5 | 250 |
| Consumo annuo / Annual Energy Consumption | kWh/a | 8.935 | 14.454 | 17.870 |
| Potenza elettrica mobile / Electric power cabinet | W | 3400 | 5500 | 6800 |
| Controllo / Control | ELECTRONIC | Easy Touch Control | | |

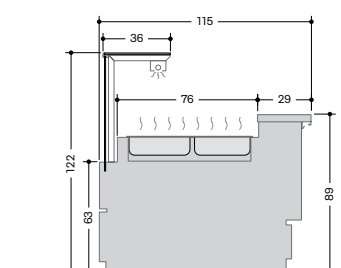
| | | | | |
|---|--------------|--------------------|---------------|---------------|
| EX 410 | L (cm)* | 125 | 187.5 | 250 |
| Consumo annuo / Annual Energy Consumption | kWh/a | 6.570 | 10.512 | 13.140 |
| Potenza elettrica mobile / Electric power cabinet | W | 2500 | 4000 | 5000 |
| Controllo / Control | ELECTRONIC | Easy Touch Control | | |



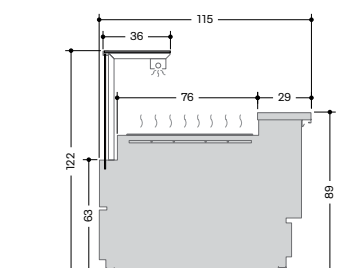
EX 100



EX 450 H-COMBI



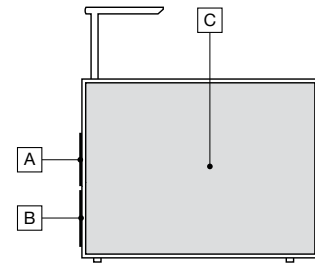
EX 400



EX 410

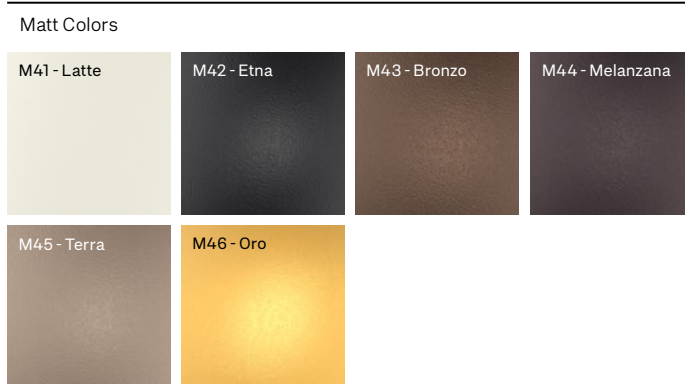
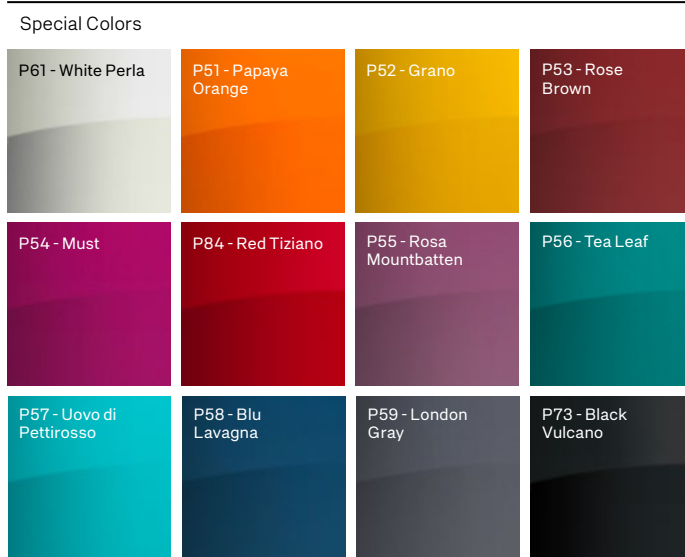
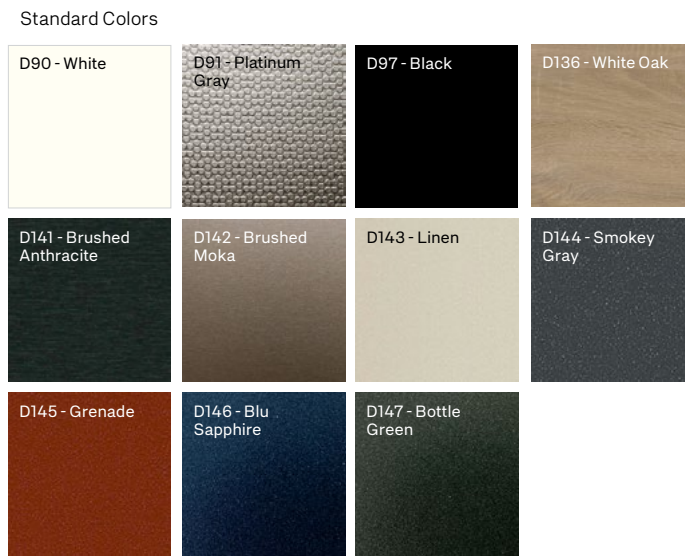
L (cm)*= Lunghezza senza spalle. Spessore 1 spalla: 4 cm
L (cm)*= Lenght without endwalls. Thickness 1 endwall: 4 cm

Le caratteristiche tecniche potranno subire modifiche senza preavviso.
EN Technical details could be changed without notice.
FR Les caractéristiques techniques pourraient subir des modifications sans préavis.
DE Änderungen vorbehalten.



| | |
|----------|---|
| A | Standard Colors RAL* Special Colors* Matt Colors* I301* I303* |
| B | Standard Colors RAL* Special Colors* Matt Colors* I301* I303* |
| C | D91 D97 Other Standard Colors* |

*= Colore con sovrapprezzo
 *= Color at Extra cost
 *= Supplément couleur
 *= Farb mit Aufpreis



EXTRA

TRENDY ENTRY LEVEL