

# ESPRIT

## FAST & FRESH

CRIOCCABIN  
TASTE PRESENTATION





Esprit is the refrigerated display case designed to meet a new way of approaching fast food. A neat and clean design with a hinged opening window. Its essential lines allow it to fit in perfectly with any interiors, so that it can be freely customised by arranging its modules to taste.

#### **IT**

Esprit è la vetrina refrigerata progettata per soddisfare i nuovi approcci della ristorazione veloce. Un design pulito ed elegante, con vetrina apribile a compasso. Le sue linee essenziali la rendono adatta a integrarsi perfettamente con l'arredamento di ogni locale, lasciando spazio alla massima creatività per la personalizzazione dei moduli.





D136 White Oak

The Perfect Fit for Every Room

## L'espositore ideale per Eatery.

Infinite soluzioni per soddisfare tutte le esigenze della ristorazione gourmet: Esprit è perfetto per l'esposizione di sandwich, pasticceria, cioccolateria, pizza e cibi caldi. L'espositore giusto per i locali di tendenza in cui vendita, take-away e consumo sul posto si combinano in un unico concetto.

### EN An ideal display case for Eatery.

Endless solutions to cater any gourmet catering need: Esprit is perfect to display sandwiches, pastry and chocolate creations, pizza and warm dishes. Just the right display for trendy store concepts, where sale, take-away and on-site dining merge together.

### FR Le présentoir idéal pour le service-traiteur.

Des solutions infinies pour satisfaire toutes les exigences de la restauration gourmet: Esprit se prête parfaitement à l'exposition de sandwiches, de pâtisseries, de chocolats, de pizzas et de plats chauds. Le présentoir parfait pour les établissements à la mode où la vente, les plats à emporter et la consommation sur place sont réunis dans un seul concept.

### DE Die ideale Kühltheke für Eatery.

Unbegrenzte Lösungen für alle Ansprüche des Gourmet-Caterings: Esprit eignet sich perfekt für die Präsentation von Sandwiches, Gebäck, Schokolade, Pizza und warmen Speisen. Die richtige Kühltheke für Trendlokale, in denen Verkauf, Take-away und Verzehr vor Ort in einem Konzept vereint sind.

1 Teca in vetro incollato.  
EN Fixed glass case.  
FR Vitrine en verre collé.  
DE Glasvitrine mit geklebtem Glas.

2 Complementi d'arredo realizzabili su richiesta del cliente (optional).  
EN Furnishing upon customer request (optional).  
FR Pièces de décoration sur requête du client (optional).  
DE Erreichbare Einrichtungsgegenstände bei Anfrage des Kunden (optional).

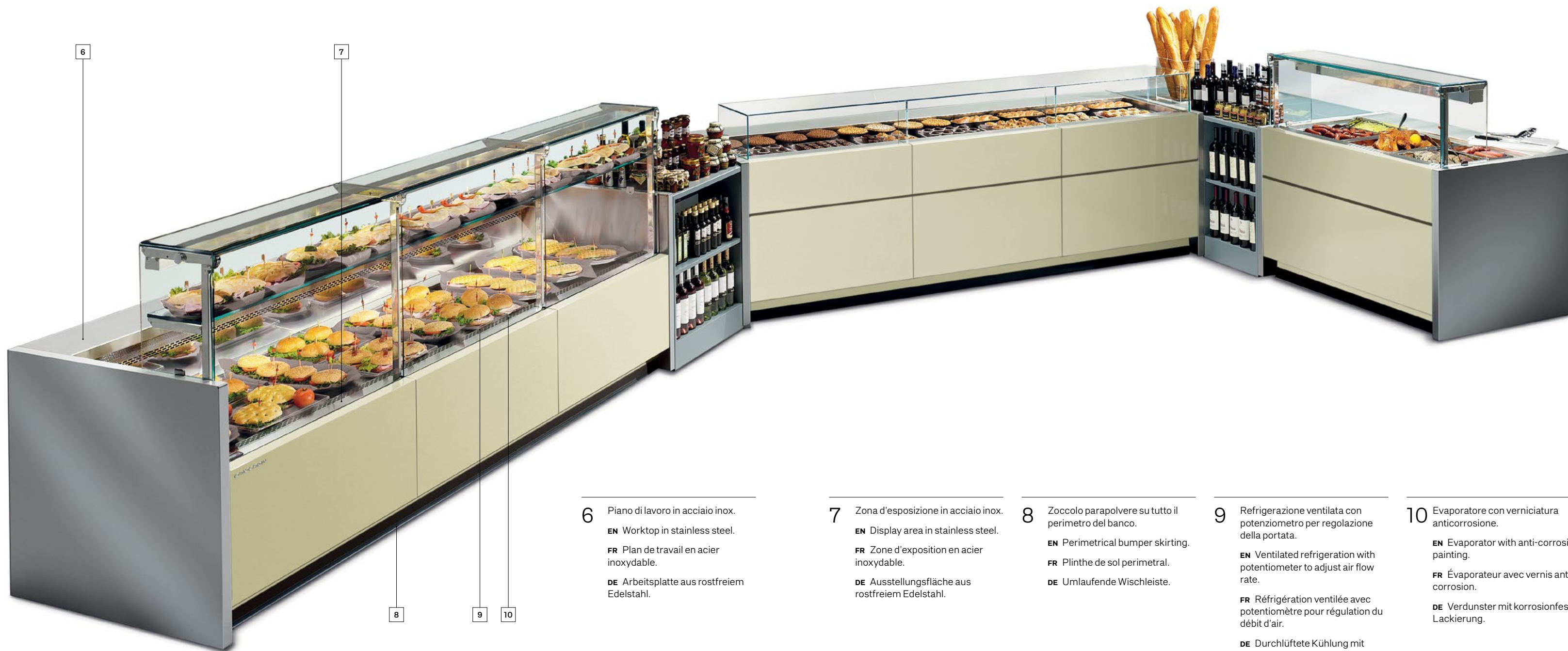
3 Ventilazione frontale antiappannante.  
EN Anti-fogging front and side ventilation.  
FR Ventilation frontale antibuée.  
DE Antibeschlag Frontumluftkühlung.

4 Illuminazione CRIOLED®.  
EN CRIOLED® lighting.  
FR Éclairage CRIOLED®.  
DE CRIOLED®-Beleuchtung.

5 Vetro apribile a compasso.  
EN Lift-forward glass.  
FR Vitres carrées rabattables.  
DE Geraden Kippscheiben.







6

7

8

9

10

- 6** Piano di lavoro in acciaio inox.  
**EN** Worktop in stainless steel.  
**FR** Plan de travail en acier inoxydable.  
**DE** Arbeitsplatte aus rostfreiem Edelstahl.

- 7** Zona d'esposizione in acciaio inox.  
**EN** Display area in stainless steel.  
**FR** Zone d'exposition en acier inoxydable.  
**DE** Ausstellungsfläche aus rostfreiem Edelstahl.

- 8** Zoccolo parapolvere su tutto il perimetro del banco.  
**EN** Perimetrical bumper skirting.  
**FR** Plinthe de sol perimetral.  
**DE** Umlaufende Wischleiste.

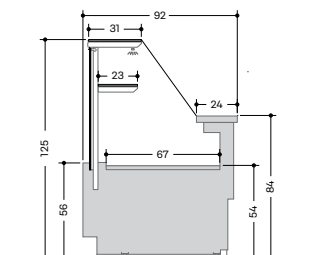
- 9** Refrigerazione ventilata con potenziometro per regolazione della portata.  
**EN** Ventilated refrigeration with potentiometer to adjust air flow rate.  
**FR** Réfrigération ventilée avec potentiomètre pour régulation du débit d'air.  
**DE** Durchlüftete Kühlung mit Potentiometer für die Einstellung der Luftmenge.

- 10** Evaporatore con verniciatura anticorrosione.  
**EN** Evaporator with anti-corrosion painting.  
**FR** Évaporateur avec vernis anticorrosion.  
**DE** Verdunster mit korrosionfester Lackierung.



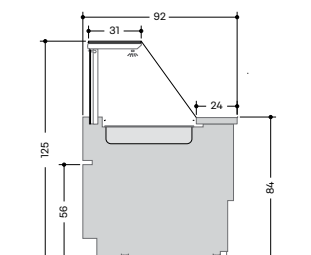
Many Catering Concepts, One Solution

<b>ES200</b>	L (cm)*	93,7	125	187,5	218,8	281,2
<b>Consumo annuo / Annual Energy Consumption</b>	<b>kWh/a</b>	<b>1689</b>	<b>2037</b>	<b>2493</b>	<b>2933</b>	<b>3397</b>
Classe climatica / Climate Class	ISO 23953-2	3 - M2				
Superficie espositiva / Display surface	m <sup>2</sup>	0,84	1,13	1,69	1,97	2,53
Carico uniformemente distribuito piano esposizione / Uniformly distributed load display surface:	Kg/m <sup>2</sup>	105				
Carico uniformemente distribuito mensole in vetro / Uniformly distributed load glass shelves	Kg/m <sup>2</sup>	30				
Gruppo frigorifero / Refrigeration unit	GAS	R290				
Controllo - banco con gruppo frigorifero / Control - cabinet with built-in refrigerator unit	ELECTRONIC	Easy Touch Control				



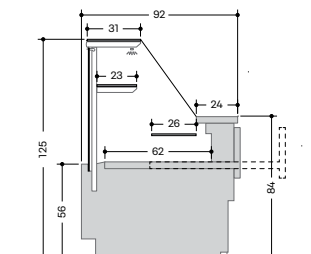
ES 200

<b>ES210</b>	L (cm)*	93,7	125	187,5	218,8	281,2
<b>Consumo annuo / Annual Energy Consumption</b>	<b>kWh/a</b>	<b>1689</b>	<b>2037</b>	<b>2493</b>	<b>2933</b>	<b>3397</b>
Classe climatica / Climate Class	ISO 23953-2	3 - M2				
Superficie espositiva / Display surface	m <sup>2</sup>	0,47	0,63	0,95	1,11	1,42
Carico uniformemente distribuito piano esposizione / Uniformly distributed load display surface	Kg/m <sup>2</sup>	105				
Gruppo frigorifero / Refrigeration unit	GAS	R290				
Controllo - banco con gruppo frigorifero / Control - cabinet with built-in refrigerator unit	ELECTRONIC	Easy Touch Control				



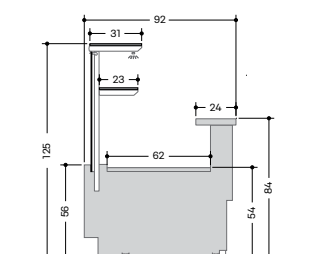
ES 210

<b>ES300</b>	L (cm)*	93,7	125	187,5	218,8	281,2
<b>Consumo annuo / Annual Energy Consumption</b>	<b>kWh/a</b>	<b>1644</b>	<b>1980</b>	<b>2419</b>	<b>2835</b>	<b>3284</b>
Classe climatica / Climate Class	ISO 23953-2	3 - M2				
Superficie espositiva / Display surface	m <sup>2</sup>	0,80	1,06	1,59	1,86	2,39
Carico uniformemente distribuito piano esposizione / Uniformly distributed load display surface	Kg/m <sup>2</sup>	105				
Carico uniformemente distribuito mensole in vetro / Uniformly distributed load glass shelves	Kg/m <sup>2</sup>	30				
Gruppo frigorifero / Refrigeration unit	GAS	R290				
Controllo - banco con gruppo frigorifero / Control - cabinet with built-in refrigerator unit	ELECTRONIC	Easy Touch Control				



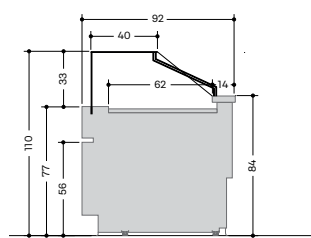
ES 300

<b>ES310</b>	L (cm)*	93,7	125	187,5	218,8	281,2
Superficie espositiva / Display surface	m <sup>2</sup>	0,58	0,78	1,16	1,36	1,74
Carico uniformemente distribuito piano esposizione / Uniformly distributed load display surface	Kg/m <sup>2</sup>	105				
Carico uniformemente distribuito mensole in vetro / Uniformly distributed load glass shelves	Kg/m <sup>2</sup>	30				



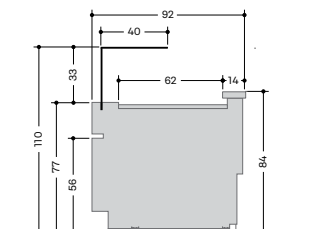
ES 310

<b>ES340</b>	L (cm)*	93,7	125	187,5	218,8	281,2
<b>Consumo annuo / Annual Energy Consumption</b>	<b>kWh/a</b>	<b>1600</b>	<b>1897</b>	<b>2406</b>	<b>2671</b>	<b>3148</b>
Superficie espositiva / Display surface	m <sup>2</sup>	0,61	0,81	1,22	1,42	1,83
Carico uniformemente distribuito piano esposizione / Uniformly distributed load display surface	Kg/m <sup>2</sup>	105				
Gruppo frigorifero / Refrigeration unit	GAS	R290				
Controllo / Control	ELECTRONIC	Easy Touch Control				



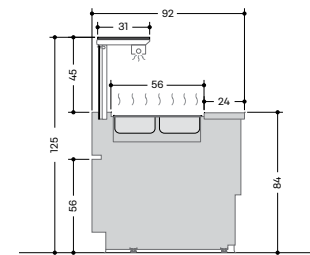
ES 340

<b>ES350</b>	L (cm)*	93,7	125	187,5	218,8	281,2
<b>Consumo annuo / Annual Energy Consumption</b>	<b>kWh/a</b>	<b>1687</b>	<b>2020</b>	<b>2504</b>	<b>2795</b>	<b>3232</b>
Classe climatica / Climate Class	ISO 23953-2	3 - M2				
Superficie espositiva / Display surface	m <sup>2</sup>	0,61	0,81	1,22	1,42	1,83
Carico uniformemente distribuito piano esposizione / Uniformly distributed load display surface	Kg/m <sup>2</sup>	105				
Gruppo frigorifero / Refrigeration unit	GAS	R290				
Controllo - banco con gruppo frigorifero / Control - cabinet with built-in refrigerator unit	ELECTRONIC	Easy Touch Control				



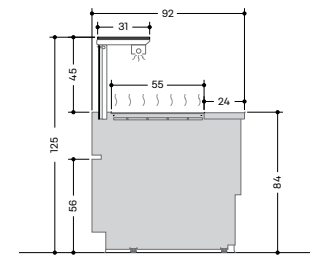
ES 350

<b>ES400</b>	L (cm)*	125	187,5
<b>Consumo annuo / Annual Energy Consumption</b>	<b>kWh/a</b>	<b>6.938</b>	<b>10.407</b>
Potenza elettrica mobile / Electric power cabinet	W	2640	3960
Vetri apribili (quantità) / Opening Glasses (quantity)		1	2
Controllo / Control:	ELECTRONIC	Easy Touch Control	



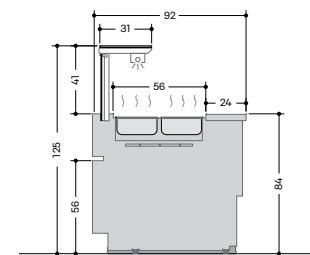
ES 400

<b>ES410</b>	L (cm)*	125	187,5
<b>Consumo annuo / Annual Energy Consumption</b>	<b>kWh/a</b>	<b>7.989</b>	<b>11.984</b>
Potenza elettrica mobile / Electric power cabinet	W	3040	4560
Vetri apribili (quantità) / Opening Glasses (quantity)		1	2
Controllo / Control:	ELECTRONIC	Easy Touch Control	



ES 410

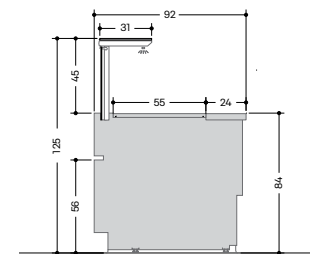
<b>ES450 H-COMBI</b>	L (cm)*	125	187,5
<b>Consumo annuo / Annual Energy Consumption</b>	<b>kWh/a</b>	<b>12.720</b>	<b>18.028</b>
Potenza elettrica mobile / Electric power cabinet	W	4840	6860
Vetri apribili (quantità) / Opening Glasses (quantity)		1	2
Controllo / Control:	ELECTRONIC	Easy Touch Control	



ES 450 H-COMBI

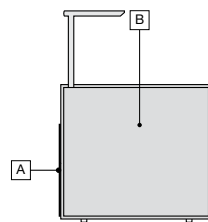
L (cm)\*= Lunghezza senza spalle. Spessore 1 spalla: 4 cm.  
L (cm)\*= Length without endwalls. Thickness 1 endwall: 4 cm.

Le caratteristiche tecniche potranno subire modifiche senza preavviso.  
EN Technical details could be changed without notice.  
FR Les caractéristiques techniques pourraient subir des modifications sans préavis.  
DE Änderungen vorbehalten.



ES 600





<b>A</b>	Standard Colors RAL* Special Colors* Matt Colors* I301* I303*
<b>B</b>	D91 D97 Other Standard Colors* RAL* Special Colors* Matt Colors* I301* I303*

\*= Colore con sovrapprezzo  
 \*= Color at Extra cost  
 \*= Supplément couleur  
 \*= Farb mit Aufpreis



\* Le informazioni relative alla classe energetica (secondo le normative Ecodesign 2019/2024 ed Energy Labelling 2019/2018) qui riportate sono riferite a modelli standard e precise configurazioni ed allestimenti del prodotto. La brochure si basa sulle informazioni disponibili al momento della sua pubblicazione. Ogni configurazione diversa da quella ivi rappresentata potrebbe comportare un cambiamento sensibile delle informazioni relative alla classe energetica. Per maggiori informazioni vi invitiamo a consultare il Registro Europeo dei Prodotti per l'Etichettatura Energetica EPREL oppure rivolgerci al nostro servizio criocare@criocabin.com.

\* **EN** The energy class information (according to the Ecodesign 2019/2024 and the Energy Labelling 2019/2018 standards) given here refers to standard models and precise product configurations and fittings. The brochure is based on the information available at the time of its publication. Any configuration other than that depicted therein may result in a significant change in the energy class information. For further information, please consult the European Product Registry for Energy Labelling (EPREL) or contact our service criocare@criocabin.com.

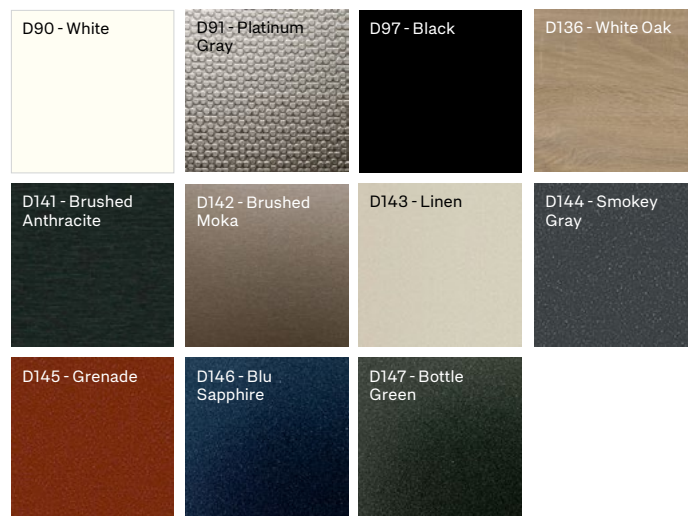
Le caratteristiche tecniche potranno subire modifiche senza preavviso.

**EN** Technical details could be changed without notice.

**FR** Les caractéristiques techniques pourraient subir des modifications sans préavis.

**DE** Änderungen vorbehalten.

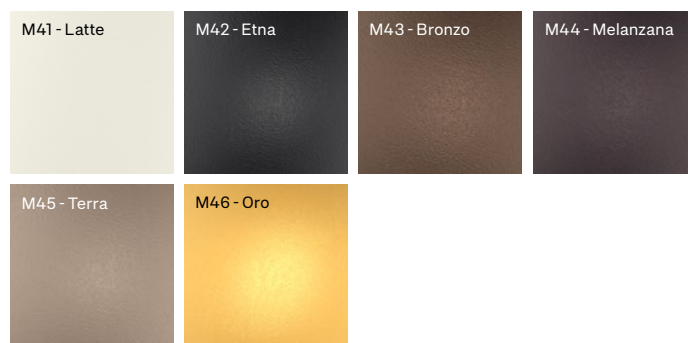
### Standard Colors



### Special Colors



### Matt Colors



# ESPRIT

## FAST & FRESH