

# EDONÉ

THE EVOLUTION  
OF A CLASSIC

CRIOCCABIN  
TASTE PRESENTATION





Edoné is the evolution of the gastronomy refrigerated counter. With a square display case and angled corners, it reinterprets a Criocabin classic. A refrigerated counter for food with clean and rational shapes, with a trendy design and excellent value for money.

**IT**

Edoné è l'evoluzione del banco refrigerato per gastronomia, l'espositore che, con vetrina quadra e angoli a spigolo, reinterpreta un classico Criocabin.

Un banco refrigerato per alimentari dalle forme pulite e razionali, con un design di tendenza e un ottimo rapporto qualità-prezzo.





Rational Shapes, Trendy Design



## Design e versatilità.

Edoné è adatto a diversi usi e diverse esigenze: dalla pasticceria, refrigerata e non, alla macelleria. L'interno del mobile in lamiera verniciata grigia può essere, su richiesta, realizzato in acciaio Inox, mentre gli angoli possono essere, a scelta, aperti o chiusi a 90°.

**EN**

### Design and versatility.

Edoné is suitable for different uses and needs: from pastries, refrigerated and not, to meat products. The inside of the cabinet is made of painted sheet metal. Upon request, it can be made of stainless steel and with open or closed - at 90°- corners.

**FR**

### Design et polyvalence.

Edoné s'adapte à une variété d'utilisations et d'exigences : de la pâtisserie réfrigérée et non réfrigérée à la boucherie. Sur demande, l'intérieur de l'armoire réalisé en tôle et verni gris peut être fourni en acier, alors que les angles peuvent éventuellement être ouverts ou fermés à 90°.

**DE**

### Design und Vielseitigkeit.

Edoné eignet sich für eine Vielzahl von Anwendungen und Anforderungen: von der gekühlten und ungekühlten Feinbäckerei bis zur Metzgerei. Das Innere des Schrankes aus grau lackiertem Blech kann auf Wunsch aus Edelstahl gefertigt werden, während die Ecken wahlweise offen oder um 90° geschlossen sein können.

**1** Piano di lavoro in acciaio inox.  
**EN** Stainless steel worktop.  
**FR** Tablette de travail en acier inox.  
**DE** Arbeitsplatte aus Edelstahl.

**2** Vetro apribile verso l'alto.  
**EN** Lift-up glasses.  
**FR** Verre ouvrable vers le haut.  
**DE** Hebeverglasung.

**3** Evaporatore trattato in cataforesi anticorrosione.  
**EN** Evaporator treated with anti-corrosion cataphoresis.  
**FR** Évaporateur traité per cataphorèse.  
**DE** Korrosionsfester Kataphorese-Behandlung.

**4** Ventilazione frontale antiappannante.  
**EN** Anti-fogging frontal ventilation.  
**FR** Ventilation frontale antibuée.  
**DE** Anti-Beschlag Frontbelüftung.

**5** Montanti anteriori in acciaio satinato.  
**EN** Brushed-steel front supports.  
**FR** Montants antérieurs en acier satiné.  
**DE** Vordere Stützstücke aus gebürstetem Stahl.



**6** Illuminazione LED 4000°K.  
**EN** LED 4000°K lighting.  
**FR** Éclairage LED 4000°K.  
**DE** LED 4000°K Beleuchtung.

**7** Refrigerazione ventilata con potenziometro per regolazione della portata.  
**EN** Ventilated refrigeration with potentiometer to adjust air flow rate.  
**FR** Réfrigération ventilée avec potentiomètre pour régulation du débit d'air.  
**DE** Durchlüftete Kühlung mit Potentiometer für die Einstellung der Luftmenge.

**8** Mobile con gruppo frigorifero incorporato dotato di Easy Touch Control.  
**EN** Cabinet with built-in refrigerator unit equipped with Easy Touch Control.  
**FR** Meuble avec groupe frigo incorporé équipé de panneau électrique Easy Touch Control.  
**DE** Möbel mit eingebautem Kühlaggregat, mit Easy Touch Control elektronischer Schalttafel ausgestattet.

**9** NUCLEUS: supplemento controllo remoto via Wi-Fi (optional).  
**EN** NUCLEUS: extra charge for remote control via Wi-Fi (optional).  
**FR** NUCLEUS: supplément pour contrôle à distance via Wi-Fi (option).  
**DE** NUCLEUS: Zuschlag für Remotesteuerung via Wi-Fi (optional).



Adapt It to Your Every Need

<b>EO100</b>	L (cm)*	93,7	125	187,5	250	312,5	375
<b>Consumo annuo / Annual Energy Consumption</b>	<b>kWh/a</b>	<b>1850</b>	<b>2296</b>	<b>3027</b>	<b>3952</b>	<b>4465</b>	<b>5156</b>
Classe climatica / Climate Class	ISO 23953-2	3 - M2					
Superficie espositiva / Display surface	m <sup>2</sup>	0,84	1,13	1,69	2,25	2,81	3,38
Carico uniformemente distribuito piano esposizione / Uniformly distributed load display surface	kg/m <sup>2</sup>	105					
Controllo - banco senza gruppo frigorifero Control - cabinet without built-in refrigerator unit		Morsettiera/Terminal block					
Controllo - banco con gruppo frigorifero Control - cabinet with built-in refrigerator unit	ELECTRONIC	Easy Touch Control					

<b>EO200</b>	L (cm)*	93,7	125	187,5	250	312,5	375
<b>Consumo annuo / Annual Energy Consumption</b>	<b>kWh/a</b>	<b>1850</b>	<b>2296</b>	<b>2890</b>	<b>3634</b>	<b>4260</b>	<b>4881</b>
Classe climatica / Climate Class	ISO 23953-2	3 - M2					
Superficie espositiva / Display surface	m <sup>2</sup>	0,84	1,13	1,69	2,25	2,81	3,38
Carico uniformemente distribuito piano esposizione / Uniformly distributed load display surface	kg/m <sup>2</sup>	105					
Controllo - banco senza gruppo frigorifero Control - cabinet without built-in refrigerator unit		Morsettiera/Terminal block					
Controllo - banco con gruppo frigorifero Control - cabinet with built-in refrigerator unit	ELECTRONIC	Easy Touch Control					

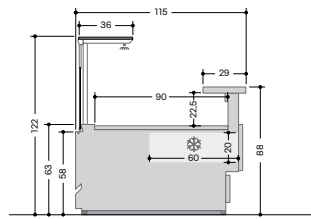
<b>EO450 H-COMBI</b>	L (cm)*	125	187,5	250
<b>Consumo annuo / Annual Energy Consumption</b>	<b>kWh/a</b>	<b>12.720</b>	<b>20.130</b>	<b>25.439</b>
Potenza elettrica mobile / Electric power cabinet	W	4840	7660	9680
Controllo / Control	ELECTRONIC	Easy Touch Control		

<b>EO400</b>	L (cm)*	125	187,5	250
<b>Consumo annuo / Annual Energy Consumption</b>	<b>kWh/a</b>	<b>8.935</b>	<b>14.454</b>	<b>17.870</b>
Potenza elettrica mobile / Electric power cabinet	W	3400	5500	6800
Controllo / Control	ELECTRONIC	Easy Touch Control		

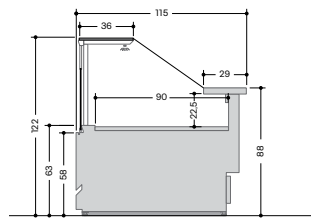
<b>EO410</b>	L (cm)*	125	187,5	250
<b>Consumo annuo / Annual Energy Consumption</b>	<b>kWh/a</b>	<b>6.570</b>	<b>10.512</b>	<b>13.140</b>
Potenza elettrica mobile / Electric power cabinet	W	2500	4000	5000
Controllo / Control	ELECTRONIC	Easy Touch Control		

L (cm)\*= Lunghezza senza spalle. Spessore 1 spalla: 4 cm.  
L (cm)\*= Length without endwalls. Thickness 1 endwall: 4 cm.

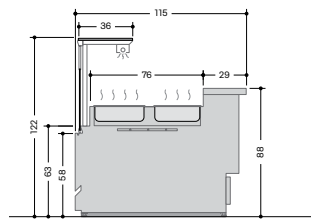
Le caratteristiche tecniche potranno subire modifiche senza preavviso.  
**EN** Technical details could be changed without notice.  
**FR** Les caractéristiques techniques pourraient subir des modifications sans préavis.  
**DE** Änderungen vorbehalten.



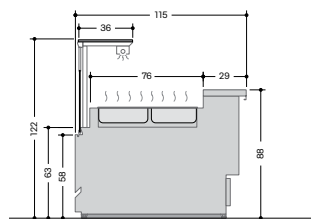
EO100



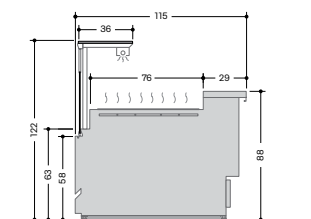
EO200



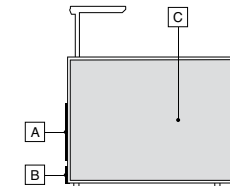
EO450 H-COMBI



EO400



EO410



<b>A</b>	Standard Colors RAL* Special Colors* Matt Colors* I301* I303*
<b>B</b>	D91 I301*
<b>D</b>	D91 D97 Other Standard Colors*

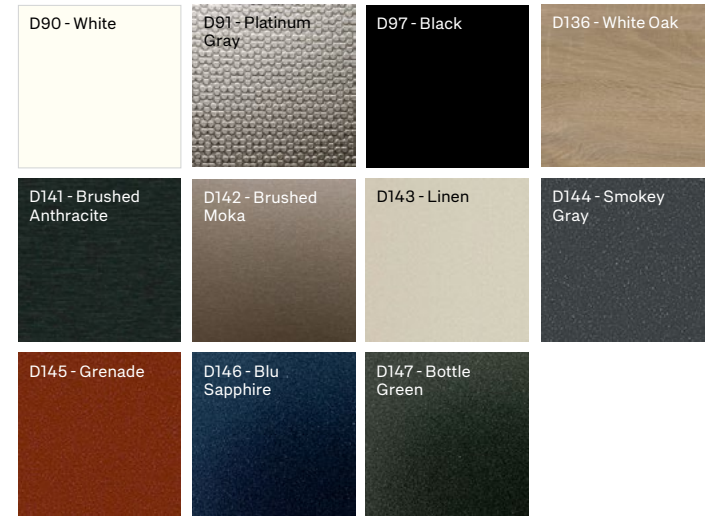
\*= Colore con sovrapprezzo  
\*= Color at Extra cost  
\*= Supplément couleur  
\*= Farb mit Aufpreis



\* Le informazioni relative alla classe energetica (secondo le normative Ecodesign 2019/2024 ed Energy Labelling 2019/2018) qui riportate sono riferite a modelli standard e precise configurazioni ed allestimenti del prodotto. La brochure si basa sulle informazioni disponibili al momento della sua pubblicazione. Ogni configurazione diversa da quella ivi rappresentata potrebbe comportare un cambiamento sensibile delle informazioni relative alla classe energetica. Per maggiori informazioni vi invitiamo a consultare il Registro Europeo dei Prodotti per l'Etichettatura Energetica EPREL oppure rivolgerci al nostro servizio criocare@criocabin.com.

\* **EN** The energy class information (according to the Ecodesign 2019/2024 and the Energy Labelling 2019/2018 standards) given here refers to standard models and precise product configurations and fittings. The brochure is based on the information available at the time of its publication. Any configuration other than that depicted therein may result in a significant change in the energy class information. For further information, please consult the European Product Registry for Energy Labelling (EPREL) or contact our service criocare@criocabin.com.

#### Standard Colors



#### Special Colors



#### Matt Colors



# EDONÉ

## THE EVOLUTION OF A CLASSIC

**CRIOCABIN**  
TASTE PRESENTATION

**CRIOCABIN SpA**

35037 Praglia di Teolo - Padova (Italy)  
Z.I. Selve - Via S. Benedetto, 40/A

Tel. +39 049 9909100  
[www.criocabin.com](http://www.criocabin.com)