

ELFIN

PERFECT PRESERVATION

CRIOCCABIN
TASTE PRESENTATION





Assisted service becomes exclusive.

A refrigerated assisted service display for the perfect preservation of each product inside a spacious display area (to be arranged as an island or in single or multiple layers).

IT

L'esclusività per il servizio assistito.

Un espositore refrigerato a servizio assistito che permette la perfetta conservazione di ogni prodotto all'interno di un'ampia superficie espositiva, la quale può essere disposta anche a isola o a ripiani, singoli oppure multipli.

To suit all the needs

Elfin is highly customisable: it can be connected to traditional refrigerated counters to create display areas for premium cuts of meat, gourmet pastry corners or any other products you wish to highlight.

IT

Si adatta a ogni esigenza.

Elfin è altamente personalizzabile: puoi canalizzarlo a banchi refrigerati tradizionali per creare spazi espositivi per i tagli nobili in macelleria, angoli di alta pasticceria o per qualsiasi prodotto si desideri mettere in evidenza.

FR

Il s'adapte à toutes les exigences.

Elfin est très personnalisable : vous pouvez le raccorder à des comptoirs réfrigérés traditionnels pour créer des espaces d'exposition pour les morceaux nobles de viande, des coins de haute pâtisserie ou pour tout autre produit que vous souhaitez mettre en valeur.

DE

Anpassungsfähig an jeden Bedarf.

Elfin lässt sich individuell anpassen: Es kann an traditionelle Kühltheken angeschlossen werden, um Präsentationsbereiche für edle Fleischstücke, hochwertige Konditoreiwaren oder andere Produkte zu schaffen, die Sie besonders hervorheben möchten.



Customizable

1 Top shelf in stainless steel AISI 304 scratchproof, customisable on request.

IT Cappello in acciaio inox AISI 304 antigraffio, personalizzabile a richiesta.

FR Tablette supérieure en acier inox AISI 304 anti-rayure, personnalisable sur demande.

DE Zahltafel aus kratzfestem Edelstahl 304, auf Wunsch anpassbar.

2 CRIOLED® lighting.

IT Illuminazione CRIOLED®.

FR Éclairage CRIOLED®.

DE CRIOLED®-Beleuchtung.

3 AISI 304 stainless angle adjustable shelves with price holder.

IT Ripiani inclinabili in acciaio inox AISI 304 con porta prezzo.

FR Étagères inclinables en acier inox AISI 304 avec porte-prix.

DE Neigbare Ablagen aus Edelstahl AISI 304 mit Preisschiene.

4 Shelf lighting: CRIOLED®

IT Illuminazione ripiani: CRIOLED®

FR Éclairage étagères: CRIOLED®

DE CRIOLED®-Regalbeleuchtung.

5 Ventilated refrigeration.

IT Refrigerazione ventilata.

FR Réfrigération ventilée.

DE Durchlüftete Kühlung.

6 Rear closure panel in plastic-coated sheet metal.

IT Chiusura posteriore con pannello in lamiera plastificata.

FR Panneau arrière en tôle plastifiée.

DE Rückwandverkleidung in plastifiziertem Blech.

7 Cabinet equipped with Wow Touch Control.

IT Mobile dotato di Wow Touch Control.

FR Meuble équipé du panneau électrique Wow Touch Control.

DE Möbel mit elektronischer Schalttafel Wow Touch Control ausgestattet.

8 NUCLEUS: extra charge for remote control via Wi-Fi (optional).

IT NUCLEUS: supplemento per controllo remoto via Wi-Fi (optional).

FR NUCLEUS: supplément pour contrôle à distance via Wi-Fi (option).

DE NUCLEUS: Zuschlag für Remotesteuerung via Wi-Fi (optional).



9 Front and rear bumper skirting.

IT Zoccolo parapolvere su tutto il perimetro del banco.

FR Plinthe de sol périmétral.

DE Umlaufende Wischleiste.

10 AISI 304 stainless steel unit interior.

IT Interno del mobile in acciaio inox AISI 304.

FR Intérieur de la vitrine en acier inox AISI 304.

DE Innenverarbeitung des Möbels aus rostfreiem Edelstahl AISI 304.

11 Front and frame can be personalized with the same design of Evodue, Ebony, Enixe.

IT Frontale e cornice personalizzabili con lo stesso design di Evodue, Ebony, Enixe.

FR Panneau frontal et décor peuvent être personnalisés avec le même design de Evodue, Ebony, Enixe.

DE Frontpanele und Rahmen mit dem gleichen Design Evodue, Ebony, Enixe personalisiert werden.

12 Multiplexable with Etoile, Ebony, Evodue, Enixe models.

IT Canalizzabile con modelli Etoile, Ebony, Evodue, Enixe.

FR Canalizable avec les modèles Etoile, Ebony, Evodue, Enixe.

DE Zusammenbaubar mit den Modellen Etoile, Ebony, Evodue, Enixe.

13 Plexiglass demister spoiler.

IT Frontalino Plexiglass.

FR Element frontal de désembuage en Plexiglass.

DE Kleine Luftprallscheibe aus Plexiglas.

14 CRIOLED® canopy and shelf lighting as standard.

IT Illuminazione cappello e ripiani CRIOLED® di serie.

FR Éclairage chapeau et tablettes CRIOLED® de série.

DE Decken- und Regalbeleuchtung mit CRIOLED® serienmäßig.

15 AISI 304 stainless steel display surface (customizable on request - optional).

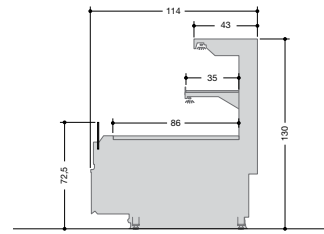
IT Piano d'esposizione in acciaio inox AISI 304 (personalizzabile su richiesta - optional).

FR Plan d'exposition en acier AISI 304 (personnalisable sur demande - optional).

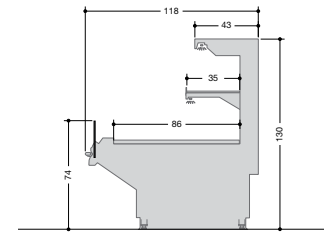
DE Auslegefläche aus Edelstahl AISI 304 (auf Kundenwünsche anpassbar - optional).



ELFIN MT/MD 130	L (cm)*	93,7	125	187,5	250	312,5	375
Annual Energy Consumption / Consumo annuo (remote version)	kWh/a	521	893	1.301	1.710	2.118	2.527
Climate Class / Classe climatica	ISO 23953-2	3 - M2					
Display surface / Superficie espositiva	m ²	1,13	1,51	2,27	3,03	3,78	4,54
Uniformly distributed load shelves / Carico uniformemente distribuito ripiano	kg/m ²	150					
Control - cabinet without built-in refrigerator unit Controllo - banco senza gruppo frigorifero		Terminal block / Morsettiera					
Control - cabinet with built-in refrigerator unit Controllo - banco con gruppo frigorifero	ELECTRONIC	Easy Touch Control					

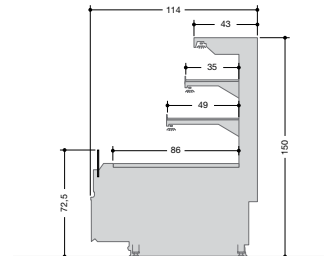


MT130

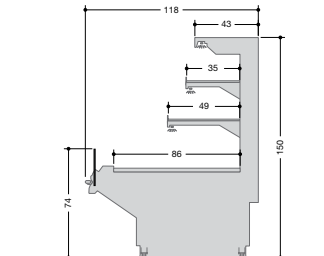


MD130

ELFIN MT/MD 150	L (cm)*	93,7	125	187,5	250	312,5	375
Annual Energy Consumption / Consumo annuo (remote version)	kWh/a	631	1.003	1.520	1.932	2.448	2.965
Climate Class / Classe climatica	ISO 23953-2	3 - M2					
Display surface / Superficie espositiva	m ²	1,59	2,13	3,19	4,25	5,31	6,38
Uniformly distributed load shelves / Carico uniformemente distribuito ripiano	kg/m ²	150					
Control - cabinet without built-in refrigerator unit Controllo - banco senza gruppo frigorifero		Terminal block / Morsettiera					
Control - cabinet with built-in refrigerator unit Controllo - banco con gruppo frigorifero	ELECTRONIC	Easy Touch Control					

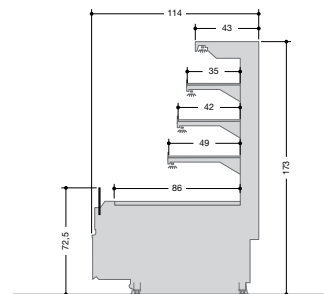


MT150

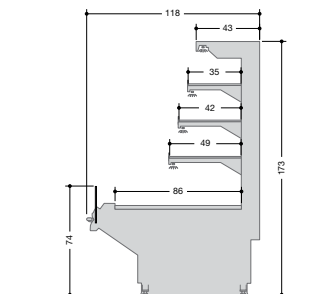


MD150

ELFIN MT/MD 170	L (cm)*	93,7	125	187,5	250	312,5	375
Annual Energy Consumption / Consumo annuo (remote version)	kWh/a	705	1.091	1.669	2.107	2.685	3.263
Climate Class / Classe climatica	ISO 23953-2	3 - M2					
Display surface / Superficie espositiva	m ²	1,99	2,65	3,98	5,30	6,63	7,95
Uniformly distributed load shelves / Carico uniformemente distribuito ripiano	kg/m ²	150					
Control - cabinet without built-in refrigerator unit Controllo - banco senza gruppo frigorifero		Terminal block / Morsettiera					
Control - cabinet with built-in refrigerator unit Controllo - banco con gruppo frigorifero	ELECTRONIC	Easy Touch Control					



MT170



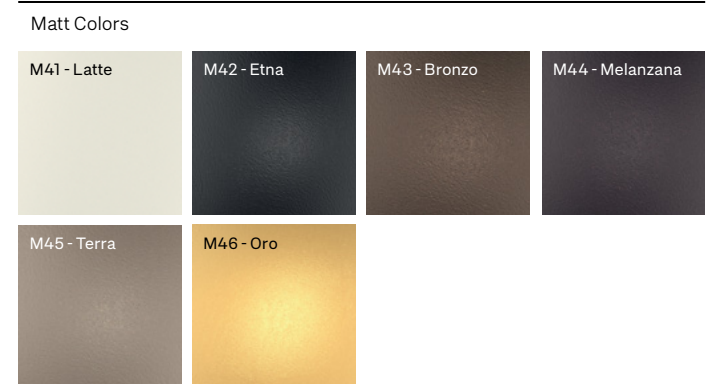
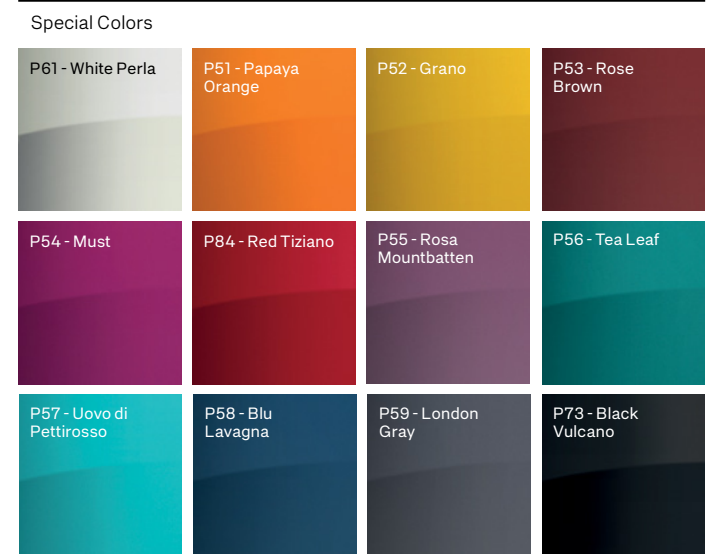
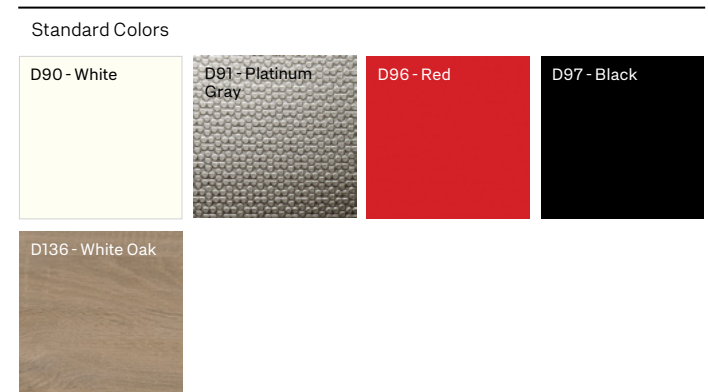
MD170

L (cm)*= Length without endwalls. Thickness 1 endwall: 4 cm.
L (cm)*= Lunghezza senza spalle. Spessore 1 spalla: 4 cm.



* The energy class information (according to the Ecodesign 2019/2024 and the Energy Labelling 2019/2018 standards) given here refers to standard models and precise product configurations and fittings. The brochure is based on the information available at the time of its publication. Any configuration other than that depicted therein may result in a significant change in the energy class information. For further information, please consult the European Product Registry for Energy Labelling (EPREL) or contact our service criocare@criocabin.com.

* **IT** Le informazioni relative alla classe energetica (secondo le normative Ecodesign 2019/2024 ed Energy Labelling 2019/2018) qui riportate sono riferite a modelli standard e precise configurazioni ed allestimenti del prodotto. La brochure si basa sulle informazioni disponibili al momento della sua pubblicazione. Ogni configurazione diversa da quella ivi rappresentata potrebbe comportare un cambiamento sensibile delle informazioni relative alla classe energetica. Per maggiori informazioni vi invitiamo a consultare il Registro Europeo dei Prodotti per l'Etichettatura Energetica EPREL oppure rivolgerci al nostro servizio criocare@criocabin.com.



Technical details could be changed without notice.

IT Le caratteristiche tecniche potranno subire modifiche senza preavviso.

FR Les caractéristiques techniques pourraient subir des modifications sans préavis.

DE Änderungen vorbehalten.

ELFIN

PERFECT PRESERVATION

CRIOCABIN
TASTE PRESENTATION

CRIOCABIN SpA

35037 Praglia di Teolo - Padova (Italy)
Z.I. Selve - Via S. Benedetto, 40/A

Tel. +39 049 9909100
www.criocabin.com