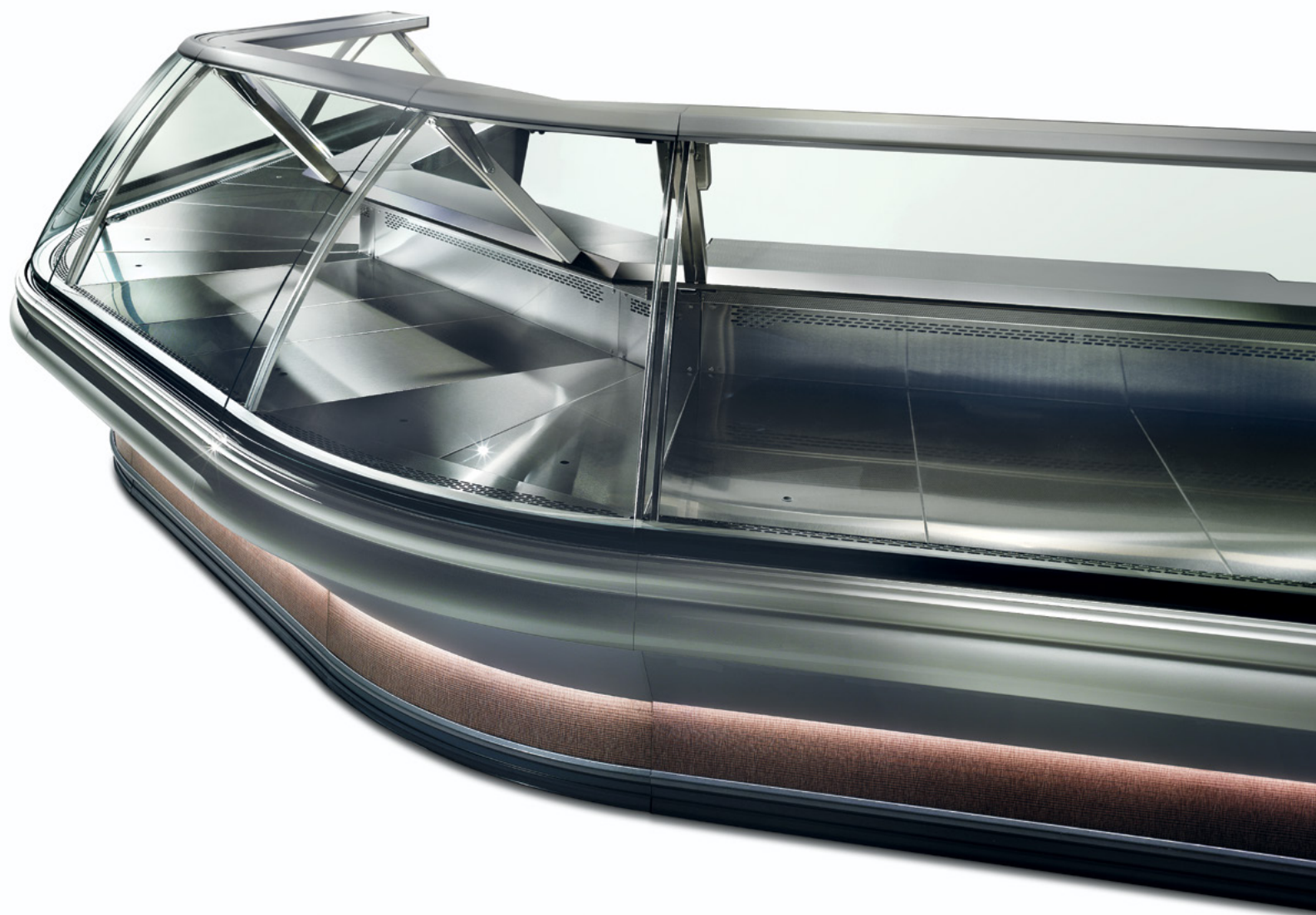


ERGO

TRADITION & TECHNOLOGY

CRIDOCABIN
TASTE PRESENTATION





Visibility and resistance.

The traditional design of the refrigerated counter, Ergo translates into optimum visibility and solidity. This refrigerated counter is perfect for butcher and grocery shops. It features round corners and top opening glass doors. It is equipped with a aluminium cap to ensure high capacity.

Available with corners open at 45° and 90° and/or closed at 45° or 90°.

IT

Visibilità e resistenza.

Il design tradizionale del banco refrigerato Ergo si traduce in visibilità ottimale e robustezza. Un banco refrigerato ideale per macellerie e gastronomie caratterizzato da una struttura con angoli sferici e vetri apribili verso l'alto, dotato di cappello in alluminio per garantire una portata elevata. È disponibile con angoli aperti a 45° e 90° e/o angoli chiusi a 45° o 90°.

The importance of functionality.

Ergo combines the best aspects of tradition, solid structure to ensure high capacity rates and excellent visibility with spherical angles.

IT L'importanza della funzionalità.

Ergo coniuga i migliori aspetti della tradizione, struttura solida per garantire portate elevate ed eccellente visibilità con angoli sferici.

FR L'importance de la fonctionnalité.

Ergo combine les meilleurs aspects de la tradition, une structure solide pour garantir des débits élevés et une excellente visibilité avec angles sphériques.

DE Die Bedeutung der Funktionalität.

Ergo kombiniert die besten Aspekte der Tradition, eine solide Struktur, um hohe Flussraten und eine hervorragende Sicht mit sphärischen Winkeln sicherzustellen.



Functionality

- 1** Lift-up glasses.
IT Vetri apribili verso l'alto a pistoni.
FR Glaces relevables.
DE Hebeglasscheibe.

- 2** LED lighting 4000°K.
IT Illuminazione LED 4000°K.
FR Éclairage LED 4000°K.
DE LED-Beleuchtung 4000°K.

- 3** RAL9006 Gray painted display surface (stainless steel upon request).
IT Zona esposizione verniciata grigio RAL 9006 (a richiesta in acciaio inox).
FR Zone d'exposition vernis gris RAL9006 (sur demande en acier inox).
DE Grau RAL9006 lackierte Auslagefläche (auf Anfrage aus Edelstahl).

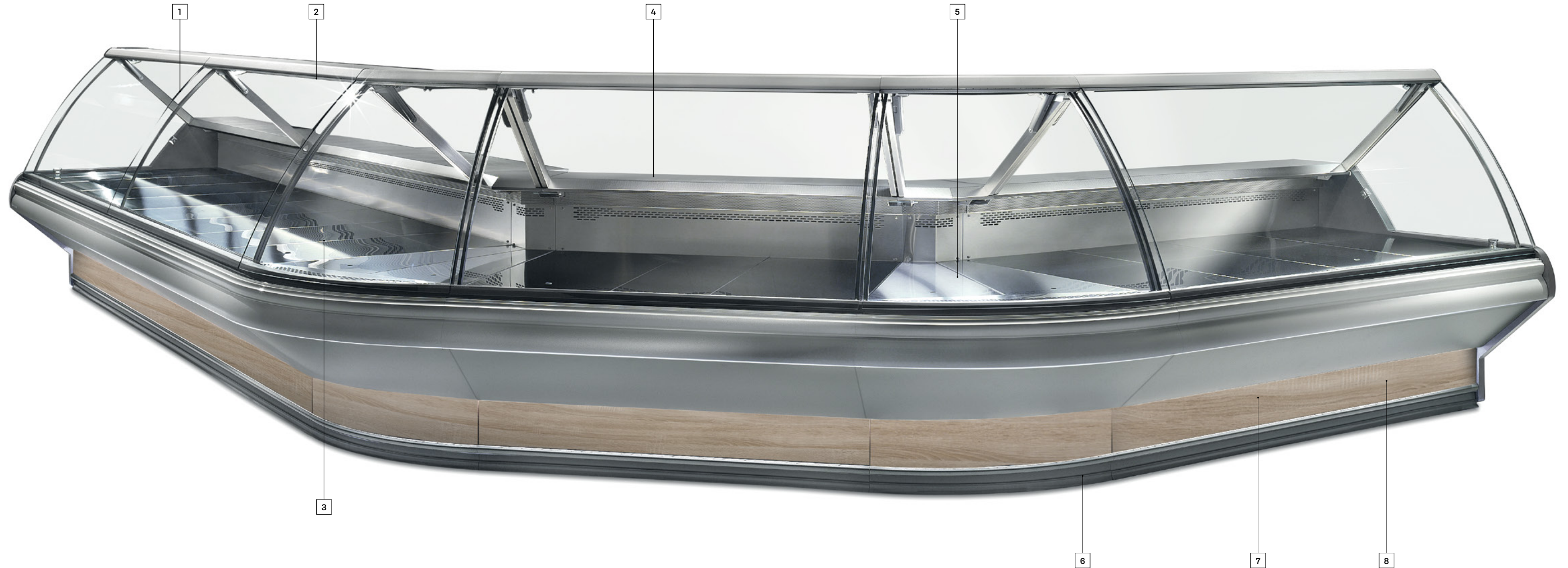
- 4** Working board in stainless steel.
IT Piano di lavoro in acciaio inox.
FR Tablette de travail en acier inox.
DE Arbeitsplatte aus Edelstahl.

- 5** Ventilated refrigeration.
IT Refrigerazione ventilata.
FR Réfrigération ventilée.
DE Durchlüftete Kühlung.

- 6** Dust profile on the perimeter of the bench.
IT Profilo para-polvere sul perimetro del banco.
FR Profil de poussière sur le périmètre du banc.
DE Staubprofil am Umfang der Bank.

- 7** Customisable front panel on customer's request.
IT Frontale personalizzabile su richiesta del cliente.
FR Panneau frontal personnalisable sur requête.
DE Individuell gestaltbare Frontpaneel bei Anfrage des Kunden.

- 8** Evaporator handled with cataphoresis.
IT Evaporatore trattato in cataforesi.
FR Evaporator handled with cataphoresis.
DE Verdampfer mit Kataphorese.



9

Top shelf in painted aluminium.

IT Piano d'appoggio superiore in alluminio verniciato.

FR Surface d'appui supérieure en aluminium laqué.

DE Zahltafel aus lackiertem Aluminium.

10

Front lighting (optional).

IT Illuminazione frontale (optional).

FR Éclairage frontal (optional).

DE Frontbeleuchtung (optional).

11

Front frame in aluminium metallized Dark Gray with painted finishing.

IT Cornice frontale in alluminio verniciato metallizzato Dark Gray.

FR Décor frontal en aluminium laqué Dark Gray métallisée.

DE Frontrahmen aus lackiertem Aluminium Dark Gray metalliclackier.

12

Multiplexable.

IT Canalizzabile.

FR Canalisable.

DE Zusammenbaubar.

13

Anti-fogging front and side ventilation.

IT Ventilazione frontale antiappannante.

FR Ventilation frontale antibuée.

DE Antibeslag Frontumluftkühlung.

14

Spherical corners 90°-45° internal and external.

IT Angoli sferici 90°-45° aperti e chiusi.

FR Angles sphériques 90°-45° fermés est ouverts.

DE Abgerundete Aussen- und Innenwinkel 90°-45°.

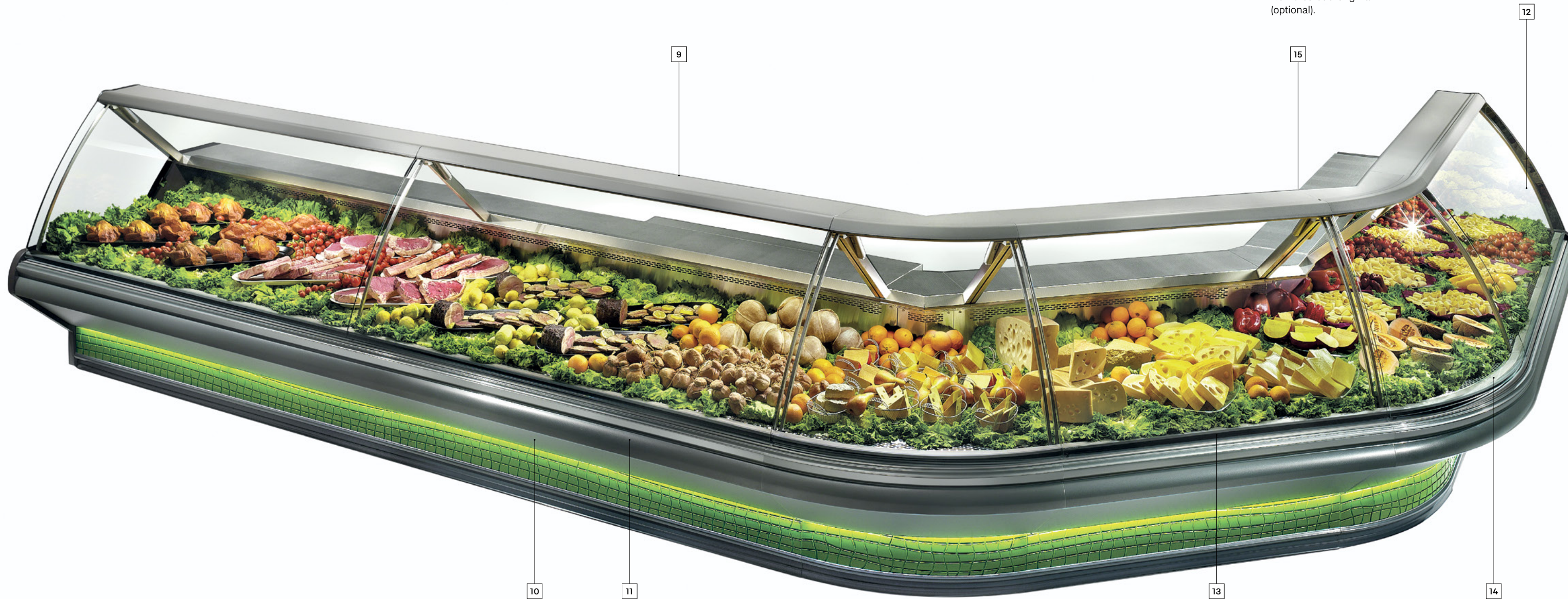
15

NUCLEUS: extra charge for remote control via Wi-Fi (optional).

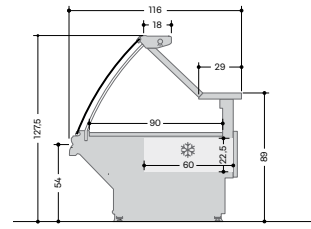
IT NUCLEUS: supplemento per controllo remoto via Wi-Fi (optional).

FR NUCLEUS: supplément pour contrôle à distance via Wi-Fi (option).

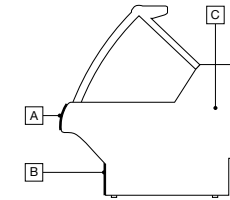
DE NUCLEUS: Zuschlag für Remotesteuerung via Wi-Fi (optional).



ER100	L (cm)*	125	187,5	250	312,5	375
Annual Energy Consumption / Consumo annuo	kWh/a	2.592	3.516	4.447	5.118	5.703
Climate Class / Classe climatica	ISO 23953-2	3 - M2				
Display surface / Superficie espositiva	m ²	1,13	1,69	2,25	2,81	3,38
Uniformly distributed load shelves / Carico uniformemente distribuito ripiano	kg/m ²	105				
Control - cabinet without built-in refrigerator unit Controllo - banco senza gruppo frigorifero		Terminal block / Morsettiera				
Control - cabinet with built-in refrigerator unit Controllo - banco con gruppo frigorifero	ELECTRONIC	Easy Touch Control				



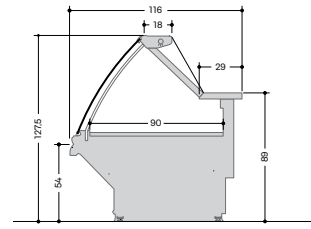
ER100



A	A82
B	Standard Colors RAL* Special Colors* I301* I302* I303*
C	T602

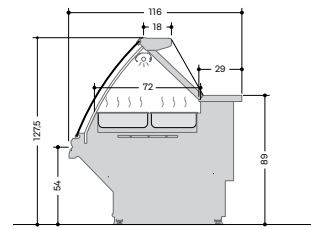
*= Color at Extra cost
 *= Colore con sovrapprezzo
 *= Supplément couleur
 *= Farb mit Aufpreis

ER200	L (cm)*	125	187,5	250	312,5	375
Annual Energy Consumption / Consumo annuo	kWh/a	2.140	2.676	3.188	3.724	4.237
Climate Class / Classe climatica	ISO 23953-2	3 - M2				
Display surface / Superficie espositiva	m ²	1,13	1,69	2,25	2,81	3,38
Uniformly distributed load shelves / Carico uniformemente distribuito ripiano	kg/m ²	105				
Control - cabinet without built-in refrigerator unit Controllo - banco senza gruppo frigorifero		Terminal block / Morsettiera				
Control - cabinet with built-in refrigerator unit Controllo - banco con gruppo frigorifero	ELECTRONIC	Easy Touch Control				



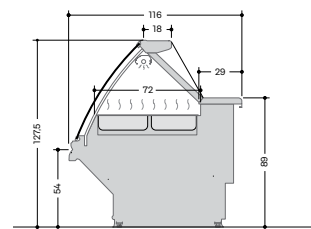
ER200

ER450 H-COMBI	L (cm)*	125	187,5	250
Annual Energy Consumption / Consumo annuo	kWh/a	12.720	20.130	25.439
Electric power cabinet / Potenza elettrica mobile	W	4840	7660	9680
Control / Controllo	ELECTRONIC	Easy Touch Control		



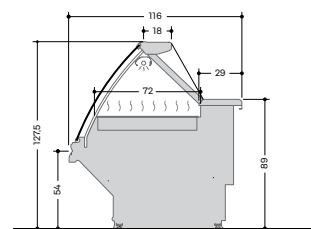
ER450 H-COMBI

ER400	L (cm)*	125	187,5	250
Annual Energy Consumption / Consumo annuo	kWh/a	8.935	14.454	17.870
Electric power cabinet / Potenza elettrica mobile	W	3400	5500	6800
Control / Controllo	ELECTRONIC	Easy Touch Control		



ER400

ER410	L (cm)*	125	187,5	250
Annual Energy Consumption / Consumo annuo	kWh/a	6.570	10.512	13.140
Electric power cabinet / Potenza elettrica mobile	W	2500	4000	5000
Control / Controllo	ELECTRONIC	Easy Touch Control		



ER410



* The energy class information (according to the Ecodesign 2019/2024 and the Energy Labelling 2019/2018 standards) given here refers to standard models and precise product configurations and fittings. The brochure is based on the information available at the time of its publication. Any configuration other than that depicted therein may result in a significant change in the energy class information. For further information, please consult the European Product Registry for Energy Labelling (EPREL) or contact our service criocare@criocabin.com.

* **IT** Le informazioni relative alla classe energetica (secondo le normative Ecodesign 2019/2024 ed Energy Labelling 2019/2018) qui riportate sono riferite a modelli standard e precise configurazioni ed allestimenti del prodotto. La brochure si basa sulle informazioni disponibili al momento della sua pubblicazione. Ogni configurazione diversa da quella ivi rappresentata potrebbe comportare un cambiamento sensibile delle informazioni relative alla classe energetica. Per maggiori informazioni vi invitiamo a consultare il Registro Europeo dei Prodotti per l'Etichettatura Energetica EPREL oppure rivolgerci al nostro servizio criocare@criocabin.com.

Standard Colors			
D90 - White	D91 - Platinum Gray	D96 - Red	D97 - Black
D136 - White Oak			

Special Colors			
P61 - White Perla	P51 - Papaya Orange	P52 - Grano	P53 - Rose Brown
P54 - Must	P84 - Red Tiziano	P55 - Rosa Mountbatten	P56 - Tea Leaf
P57 - Uovo di Pettiroso	P58 - Blu Lavagna	P59 - London Gray	P73 - Black Vulcano

Matt Colors			
M41 - Latte	M42 - Etna	M43 - Bronzo	M44 - Melanzana
M45 - Terra	M46 - Oro		

L (cm)*= Length without endwalls. Thickness 1 endwall: 4 cm.
 L (cm)*= Lunghezza senza spalle. Spessore 1 spalla: 4 cm.

Technical details could be changed without notice.
IT Le caratteristiche tecniche potranno subire modifiche senza preavviso.
FR Les caractéristiques techniques pourraient subir des modifications sans préavis.
DE Änderungen vorbehalten.

ERGO

TRADITION & TECHNOLOGY

CRIOCABIN
TASTE PRESENTATION

CRIOCABIN SpA

35037 Praglia di Teolo - Padova (Italy)
Z.I. Selve - Via S. Benedetto, 40/A

Tel. +39 049 9909100
www.criocabin.com